

# LANGDON PARK

6TH FORM FOUNDATION



STUDENT HANDBOOK  
2021-2022





# WELCOME STUDENTS

We are excited to welcome you to Langdon Park 6th Form Foundation programme.

My vision is that Langdon Park 6th Form Foundation programme will be an educational beacon within the London Borough of Tower Hamlets which inspires, ignites and unlocks the creativity and imagination of every young person with SEND in our community.

Learning and developing at Langdon Park 6th Form Foundation takes place within a caring and supportive learning environment. This atmosphere is underpinned by challenge and high expectations, which nurtures each student to achieve their full and unique potential.

Our curriculum is outstanding, providing a broad and balanced range of experiences and opportunities for all our SEND students.

All our vocational courses are taught by specialists and highly trained professionals and our academic courses are led by qualified subject-specific teachers.

Our aim is to recognise each student's individual talents where we assist all our students to transition successfully into adulthood. I truly believe that Langdon Park 6th Form Foundation is quite unique, we offer a learning environment to be proud of, amazing teachers and support staff. As a result of this, our students are happy, engaged and feel supported within their school.

**MS. SASHA  
SAPPLETON-STONE**

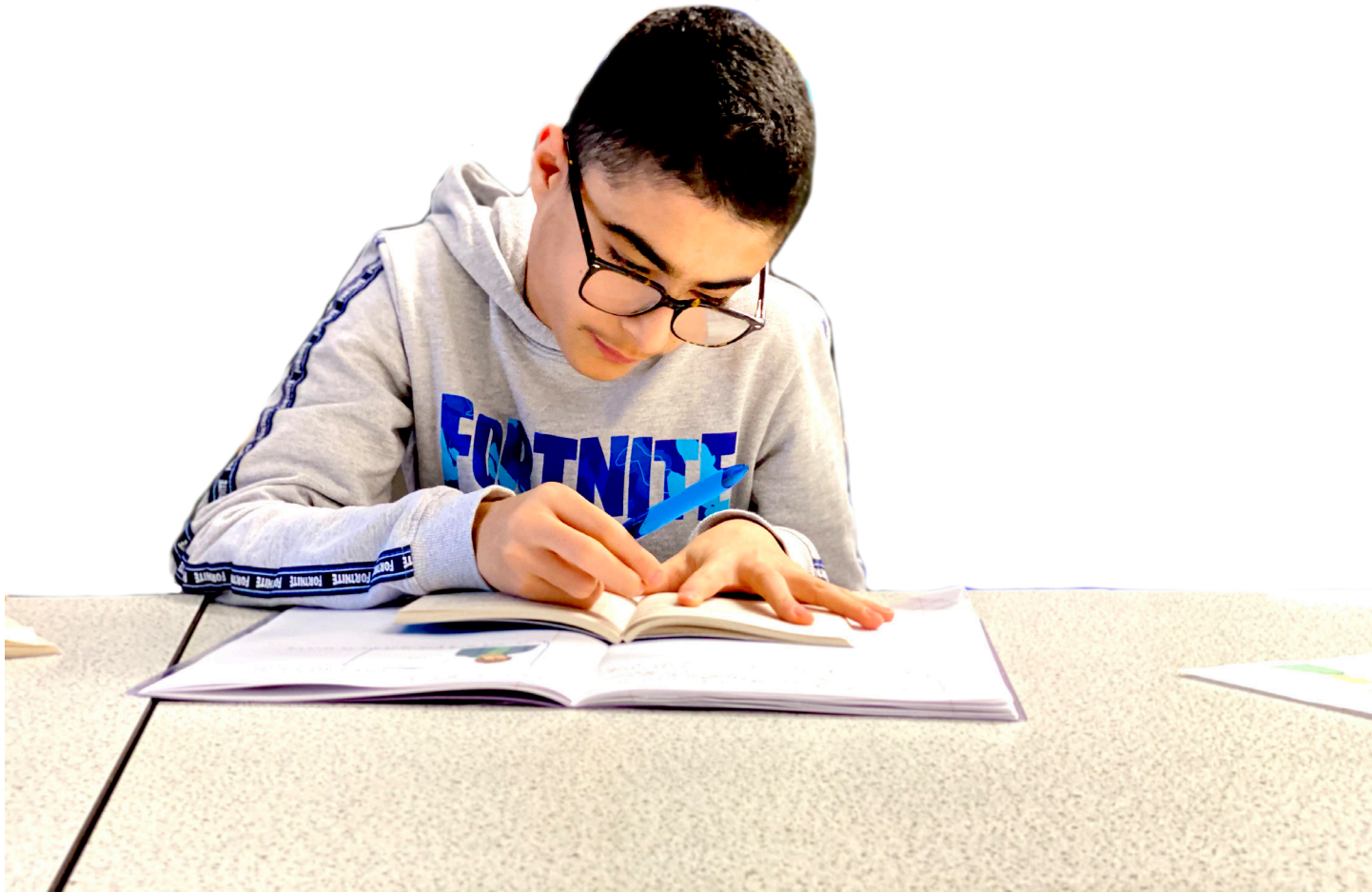
DEPUTY SENCO AND  
6TH FORM FOUNDATION LEAD





# WHO ARE WE?

Langdon Park 6th Form Foundation provides a 2 year full time education for all SEND students with an Education, Health and Care plan (EHCP).



# OUR MISSION

Langdon Park 6th Form Foundation provides an environment in which all young people are of equal importance and are valued for the individuals they are, regardless of race, culture or background.

We believe that every child has potential to learn, thrive and grow. In so doing, we provide an educational community that is holistic and formal through the delivery of vocational courses and core subjects.

We give all young people with SEND the opportunity for educational development to the highest possible level, together with the development of each individual's talents, abilities, skills and understanding.


# REFERRAL AND ADMISSION

Referrals can occur throughout the year for all post 16 SEND students with an EHCP. Admissions will be dependent on availability and course suitability.

Formal applications for admission should be made by the Local Authority (LA), although families and carers can request an informal visit.







# OUR APPROACH

OUR APPROACH AT LANGDON  
PARK 6TH FORM FOUNDATION IS  
UNDERPINNED BY OUR  
4-BES PRINCIPLE

## 1. Be a Learner:

Every child has the potential to learn new skills and gain the best qualification. We strive to ensure that our young people achieve their maximum potential

## 2. Be Professional:

All staff model high standards and we encourage our students to emulate these standards. Being a professional means being reliable, punctual, respectful and competent.

## 3. Be Inclusive:

We encourage our young people to achieve and celebrate their differences by offering them a safe, caring and positive environment.

## 4. Be Knowledgeable:

Our programme of study is enriched through the various vocational and core subjects that students are taught.

We adopt a collaborative, multi-disciplinary, individualised and holistic approach.



# CURRICULUM OVERVIEW

OUR CURRICULUM IS DESIGNED TO BE BOTH BROAD AND ACCESSIBLE, REFLECTING OUR HOLISTIC APPROACH TO LEARNING.

IT OFFERS OUR YOUNG PEOPLE THE OPPORTUNITY TO ENJOY THE PROCESS OF LEARNING IN PREPARATION FOR ADULTHOOD.



- We set appropriate learning challenges to enable our students to experience success
- We respond to our students' needs by creating a bespoke educational programme that takes into account their interests and strengths
- We provide appropriate resources to enable curriculum access and to overcome any obstacles to learning



# COURSES TAUGHT

Maths

English

Catering

Sports Coaching

ICT

Work Skills and Employability

Motor Mechanics

Art, Design and Fashion Entrepreneurship





# MATHS

Students are given the opportunity to gain qualifications in Entry Level 1-3 and Functional Skills Level 1-2.

Bite-sized units are incorporated which are perfect for developing the underpinning skills and knowledge required for students to progress as well as building confidence and ability in these subjects.

Our Maths programme aims to help students to:

- Become fluent in the fundamentals of mathematics, including through varied and frequent practice
- Understanding and the ability to recall and apply knowledge with increasing speed and accuracy
- Solve problems by applying their mathematical knowledge to a variety of routine and real-life problems



# ENGLISH

The focus in English is for all our SEND students to gain a qualification in Entry Level 1-3, Functional Skills Level 1-2.

The curriculum is designed to equip our SEND students with the life skills they need to succeed. It aims to ensure that our students are able to communicate with confidence and independence and offers excellent preparation for employment and further education.

The English curriculum is comprised of 3 components whereby, students have to successfully pass all before the qualification can be awarded:

- Speaking, Listening and Communicating assessment
- Reading assessment
- Writing assessment



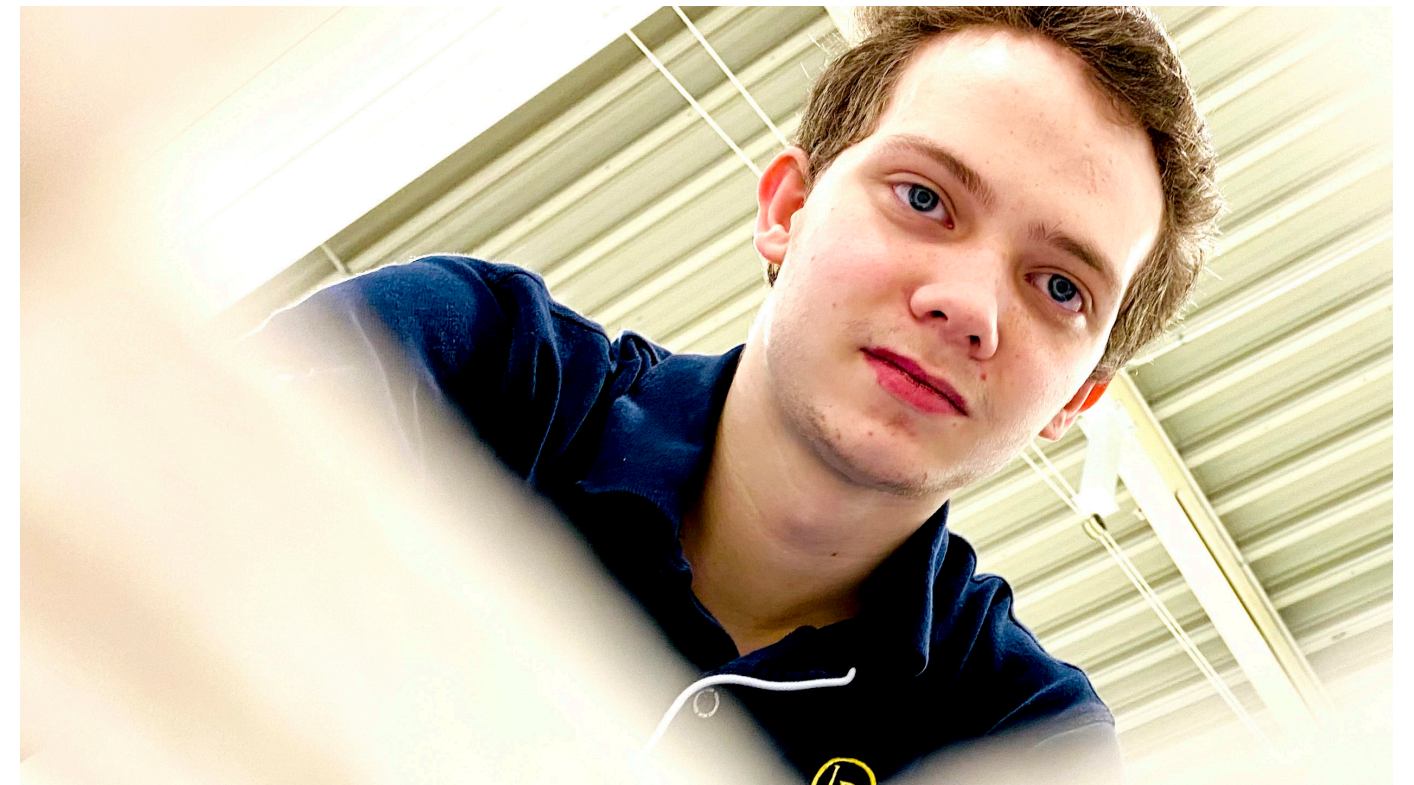
# CATERING

This Catering course is made up of exciting and rewarding activities to develop skills and knowledge through cooking and food preparation. This course helps our SEND students to develop practical cooking skills, as well as personal, social and work-related skills.

The aim of this course is to enable our SEND students to:

- Understand what is meant by healthy eating and wellbeing
- Understand and demonstrate the skills and techniques needed to cook
- Gain an understanding of the importance of sustainability and cooking on a budget
- Understand about aspects of the food industry and how it operates

NB: Students will study this course as part of the Year 12 programme only.



# SPORTS COACHING

The Sports Coaching course focuses on a number of components:

- Understand and perform practical activities
- Evaluate their performance
- Understand health-related aspects

All our SEND students are expected to undertake a programme of learning of practical activities. Students are encouraged through this course to work as a team and therefore, develop their leadership qualities.

Sports Coaching challenges our SEND students to perform effectively under applied conditions, using tactics or compositional techniques as necessary and observe the rules and conventions of the activities. In addition, students are required to evaluate their performance in order to determine each others strengths and weaknesses, and suggest simple ways of improving the quality and effectiveness of the performance.

NB: Students will study this course as part of the Year 12 programme only.



# ICT

This ICT course enables our SEND students to gain practical knowledge of ICT.

There are three main learning outcomes:

1. Using ICT – students will interact with and use ICT systems to meet given needs; store information; follow safety and security practices.
2. Finding and selecting information – students will use simple searches to find information; select relevant information that matches requirements of given task.
3. Developing, presenting and communicating information – students will enter and develop different types of information to meet given needs; bring together different types of information; use ICT-based communication.

NB: Students will study this course as part of the Year 12 programme only.



# WORK SKILLS & EMPLOYABILITY

This programme is taught externally by Tower Project. This Work Skills and Employability course is designed to offer our SEND students with a flexible programme of study to improve their understanding and application of employability skills.

Students are able to gain qualifications in Entry Level 1-3. As such, these qualifications have been developed to ensure that the knowledge, skills and understanding they provide are relevant, current and useful for learners and potential employers.

As part of this course, students employability skills are quickly, accurately and objectively measured. This enables us to identify and agree students' strengths and weaknesses, and then design bespoke, personalised learning plans based on those areas identified for additional focus and further development.

Students are provided with invaluable work experience opportunities in sectors such as (but not limited to): retail, entertainment and hospitality.

NB: Students will study this programme in Year 12 however in Year 13, students can further develop these skills and choose this pathway. By doing this, students will be expected to attend Tower Project 4 days per week and LPS 1 day per week.

# MOTOR MECHANICS

This course is taught externally at New City College- Poplar. Students also gain a broad knowledge and understanding of health and safety in the workplace and other skills associated with working in a garage.

Students study practical aspects of the following:

- Light Vehicle Construction and Routine Maintenance
- Operating Principles of Light Vehicle Engines, Tyres, Brakes, Steering and Suspension Systems
- Operating Principles and Maintenance of Light Vehicle Transmission Systems and Electrical and Electronic Systems

NB: Students will study this course as part of the Year 12 programme only.



# ART, DESIGN & FASHION ENTREPRENEURSHIP

This programme is taught externally at ONE LAB, a professional design studio and Pearson approved Work Based Learning Centre.

The focus is for all our SEND students to gain a BTEC Level 1 Introductory qualification in Art, Design and Fashion Entrepreneurship.

SEND students will develop both sector specific and transferable skills such as:

- Developing a 2D Art Image
- Designing a Product
- Developing a Personal Progression Plan
- Organisational Skills in the Digital Era
- Communication Skills
- Working with Others
- Problem Solving
- Managing Information
- Self-Management and Development

On completion of the course, students will achieve:

- BTEC Level 1 Introductory Qualification
- Design Portfolio
- Fashion Show Exhibition
- Designed Products Sold Online and through a Pop-Up Shop

NB: Students will study this programme in Year 12 however in Year 13, students can further develop their design skills and choose this pathway.

By doing this, students will be expected to attend ONE LAB 4 days per week and LPS 1 day per week.





# HOW DOES OUR PROGRAMME FIT INTO THE NEW OFSTED FRAMEWORK?

Our courses and qualifications help us to meet Ofsted requirements by:

1. Helping our students to develop self confidence and self awareness.
2. Assisting our students to gain employability skills to prepare them for the next stage of their education, employment, self-employment or training.
3. Understanding how to keep themselves safe from risks such as abuse, sexual exploitation and extremism, including when using the internet and social media.
4. Helping students to gain relevant knowledge of how to keep themselves healthy, both emotionally and physically, including through exercising and healthy eating.
5. Personal development, so that learners are well prepared to respect others and contribute to wider society.



**“My daughter used to be so shy, reserved and quiet. Since starting at Langdon Park albeit very late, she has thrived and flourished into a confident young lady.”**

**Parent of Year 13 Student**





+44 (0)7385 292 156



SAPPLETON-STONES@LANGDONPARK.ORG



@LANGDONPARKFVL