

Special educational needs and disabilities & Social Care

Parent Carer Forum / Parent Consortium
12 October 2020



**achieving
for children**



THE ROYAL BOROUGH OF
KINGSTON
UPON THAMES



South West London
Clinical Commissioning Group

What we will cover

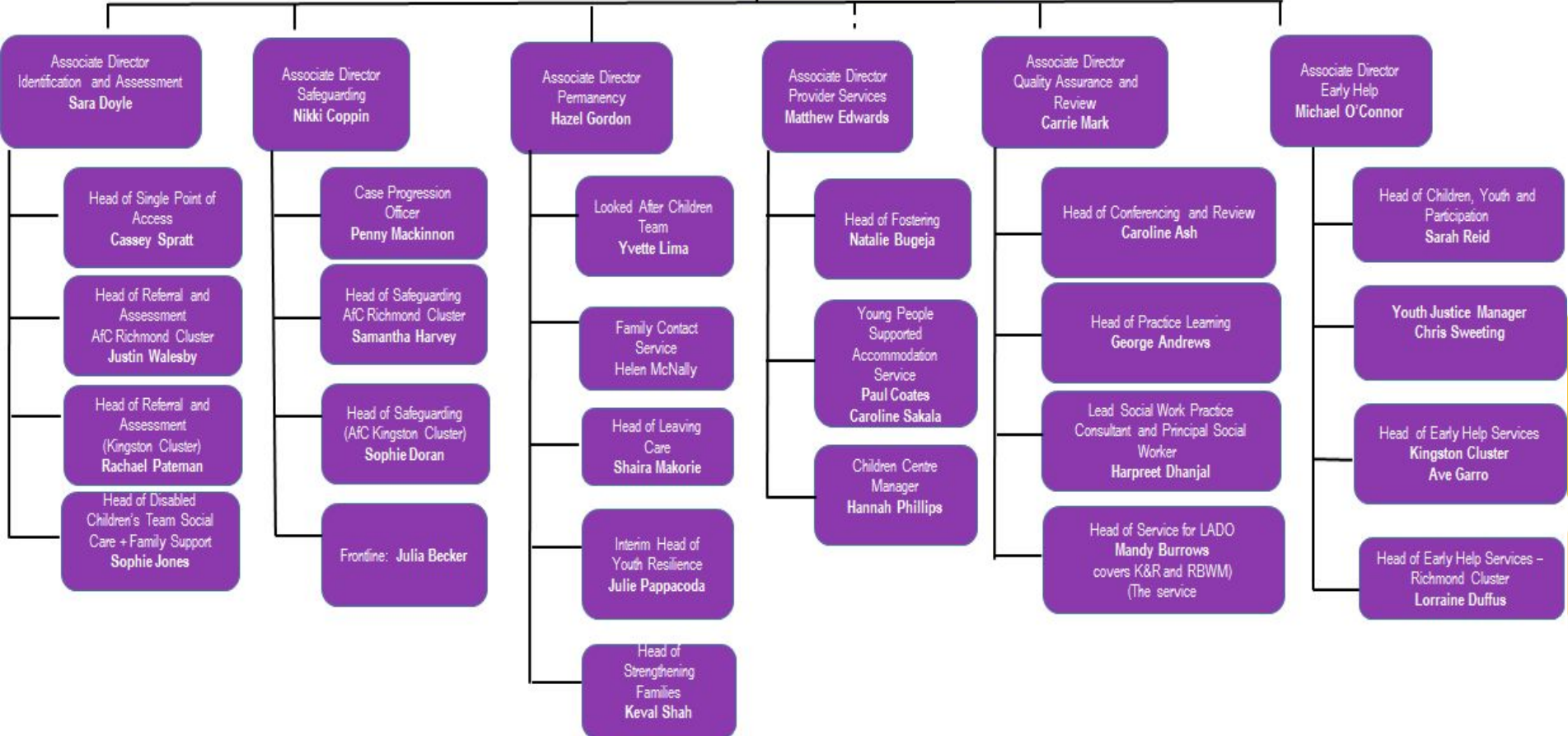
- AfC social care/family support and overview
- AfC framework for practice - Signs of Safety
- Safeguarding is everybody's business
- Disabled children criteria for specialist team (what we do, who we work with, partnership working)
- Assessments - Single assessment/Early Help/PCNA
- Preparing for Adulthood
- Quality Assurance
- EHCPs and the role of social care and family support

Social care services in Kingston (and Richmond)

Director of Children's Services
Ian Dodds

Director of Children's Social Care
Alison Twynam

Children's Social Care Structure Chart



SEND and social care in Kingston

- Champions for SEND
- All teams may contribute to EHC plans
- Any allocated worker may complete Parent Carer Needs Assessment (PCNA)
- Disabled Children's Team (DCT) only work with the children who meet the eligibility criteria
- Working closely with SEN Team
- Identifying Social Care champions for SEN
- Upskilling all staff to have greater knowledge of the Local Offer
- Joint team meetings for Disabled Children's Team and SEN Team
- Accessing training



Designated Social Care Officer for SEND (DSCO)

Newly appointed Designated Social Care Officer for SEND was appointed in September 2020, and placed within the Quality Assurance and Review Service for AfC, Richmond and Kingston:

Key with priorities:

- Support frontline practitioner's knowledge and understanding of EHC plans and SEND within Social Care.
- Strengthen existing relationships between Social Care and SEND to ensure joined up working and skill base, including a refreshed training agenda.
- Support children's social care compliance with the legislation and spirit of the SEND Code of Practice
- Place the voice of the child at the centre of the role, and ensure triangulation of both the voice of the children and parent/carer views through quality assurance and review.

The Disabled Children's Team

- The Disabled Children's Team consists of 3 services; Social Care, Family Support and Social Care Occupational Therapy.
- The team work both independently with children and families and also some families will have input from a combination of the three services.
- Children who are open to Family Support must have previously had a Social Care assessment undertaken by the Social Work team - this will identify the needs of the child / young person and their family and will be supported ongoing by Family Support.
- The Social workers and Family Support workers will use the needs assessments to recommend short breaks for children and families and then this gets taken to short breaks panel where a decision is made as to what the child/ family will be eligible for in line with their needs.

Eligibility for Disabled Children's

Team

The Disabled Children's Team work with children who are permanently severely and profoundly disabled.

- Substantial means considerable or significant factors that are life changing or limiting, and might include issues to do with risk and dependency.
- Permanent means existing indefinitely and not expected to improve. However there must be sufficient flexibility to take account of intermittent or episodic conditions.

This takes into consideration each child or young person's abilities in a number of areas;

Health, education, communication, behaviour associated with the disability, family and social relationships, self care, safety, mobility, visual and hearing impairments.

Eligibility for Family Support

Team

To be eligible children need to meet the eligibility criteria for the Children with Disabilities social work team. The child must meet the requirements in the profound or severe labelled columns in at least two of the dimensions as outlined in the Eligibility Criteria.

After a Social Care assessment has taken place the Children with Disabilities team can transfer children to the Family Support Team if a child or young person:-

- is eligible for support from the Disabled Children's Team;
- has no current safeguarding concerns;
- is not looked after or leaving care;
- has no more than 24 overnights of care per year.

Children can transfer back to the social care team should there be any new safeguarding concerns or significant changes which require a social work reassessment and oversight.

The assessments and panels

Assessment

- Single Assessment
- Parent Carers Needs Assessment
- Early Help Assessment

Panels

- Short Breaks
- SEN panel
- Health Panel
- Accomodation and Resources Panel
- Joint Agency Panel

What's going well?

- Working with Adult Services including some co-location of staff. A senior practitioner from the disabled children's team attends monthly meetings with Kingston adults transition workers to ensure all young people are captured and discussed so that plans for transition are as smooth as possible.
- Disabled Children's Team liaison with SEN colleagues has much improved over the last 18 months and there has been some co-location of staff.
- Joint team meetings
- Consultations with DCT managers/duty manager
- Health and social care liaison meetings
- Housing/Adults liaison meetings

What are we working to improve?

- Quality and timeliness of social care input into EHCPs
- SMART planning
- Family Network Meetings
- Direct work with children

What we are worried about?

- Short Breaks care in local area

What we doing to make things better?

- Extensive staff training programme
- Weekly Signs of Safety group supervision
- Joint team meetings
- Joint supervision
- SEN champions
- Collaborative quality assurance



Questions and discussion