



**achieving  
for children**



LONDON BOROUGH OF  
RICHMOND UPON THAMES



**South West London  
Clinical Commissioning Group**

# **DRAFT** Joint Commissioning Strategy

## **Special Educational Needs and Disabilities**

**2020 – 2025**

## 1. Introduction

This document sets out **how** we work together as a Special Education Needs & Disabilities Partnership in Richmond-upon-Thames and the Royal Borough of Kingston to understand the needs of children and young people with Special Education Needs & Disabilities (SEND) aged 0 to 25, both with and without an Education Health and Care Plan, and to plan for the services which will meet those needs. The cycle of understanding, planning and providing services is known as joint commissioning.

This Joint Commissioning Strategy should be read in conjunction with three other core documents that set out our understanding of need and planning to meet those needs:

- Our **Joint Strategic Needs Assessment** in respect of SEND
- Our **Self-Evaluation** as a SEND Partnership
- Our **SEND Futures Plan 2019 - 2022 (LBR) 2020 - 2025 (RBK)**

We aim for all our work in Richmond-upon-Thames and the Royal Borough of Kingston to be developed in partnership with our children, young people, parents and families - and this applies to our vision, Joint Strategic Needs Assessment (JSNA), Self-Evaluation, SEND Futures Plan and this Joint Commissioning Strategy. The work is driven by our SEND Partnership Boards, led by the Council and the Clinical Commissioning Groups (CCG), with the strong engagement of young people, parents, schools, health and social care providers, and voluntary sector partners.

The Local Authority, Clinical Commissioning Groups, Public Health and its partners work within the statutory requirements and guidance of the Children and Families Act, 2014 and the SEND Code of Practice and the clear agenda of SEND reform and culture change:

- A person-centred, joined-up approach to identifying and meeting the needs of children, young people and their families;
- Increased engagement and participation of young people and families so that they have greater choice and control, are listened to and their concerns are resolved swiftly;
- A published local offer of support, services and provision, how to access it and how to raise concerns or seek redress;
- The use of effective practice, data and wider intelligence and
- Independent assessment to drive improvement;

- Clearly-defined and understood roles and responsibilities; and
- Maximise integration of services and joint commissioning across the Local Authority and Health.

## 2. Our Vision

Every child and young person belongs to a local, inclusive community that provides the education, health and social care support they need to develop their talents and skills for a happy and fulfilling life.

All of our work in Richmond-upon-Thames and the Royal Borough of Kingston is to understand the needs of children and young people with Special Education Needs & Disabilities. Working together is at the heart of all we do.

Our shared principles guide how we will make decisions and work to achieve our vision, these principles and our vision have been co-produced through our SEND Partnerships.

<b>Our Shared Principles</b>	
<b>Co-production</b>	Children, young people, parents and carers are listened to and engaged in the design and delivery of strategies, services and the support provided to them. Children and young people have a right to say what they think, have their opinions taken into account and be involved in decisions and planning around their own lives. In the vast majority of cases parents and carers know their children better than anyone, and it is essential that their views and knowledge are incorporated in decisions being made about their child.
<b>Personalised</b>	Local provision is expanded so that children's education, health and care needs can be met locally through high quality services that are focussed on achieving the best possible outcomes for children and young people with SEND, promoting their independence and supporting them to live their lives with confidence and resilience.
<b>Integration</b>	The whole system, with education, social care and health services at the

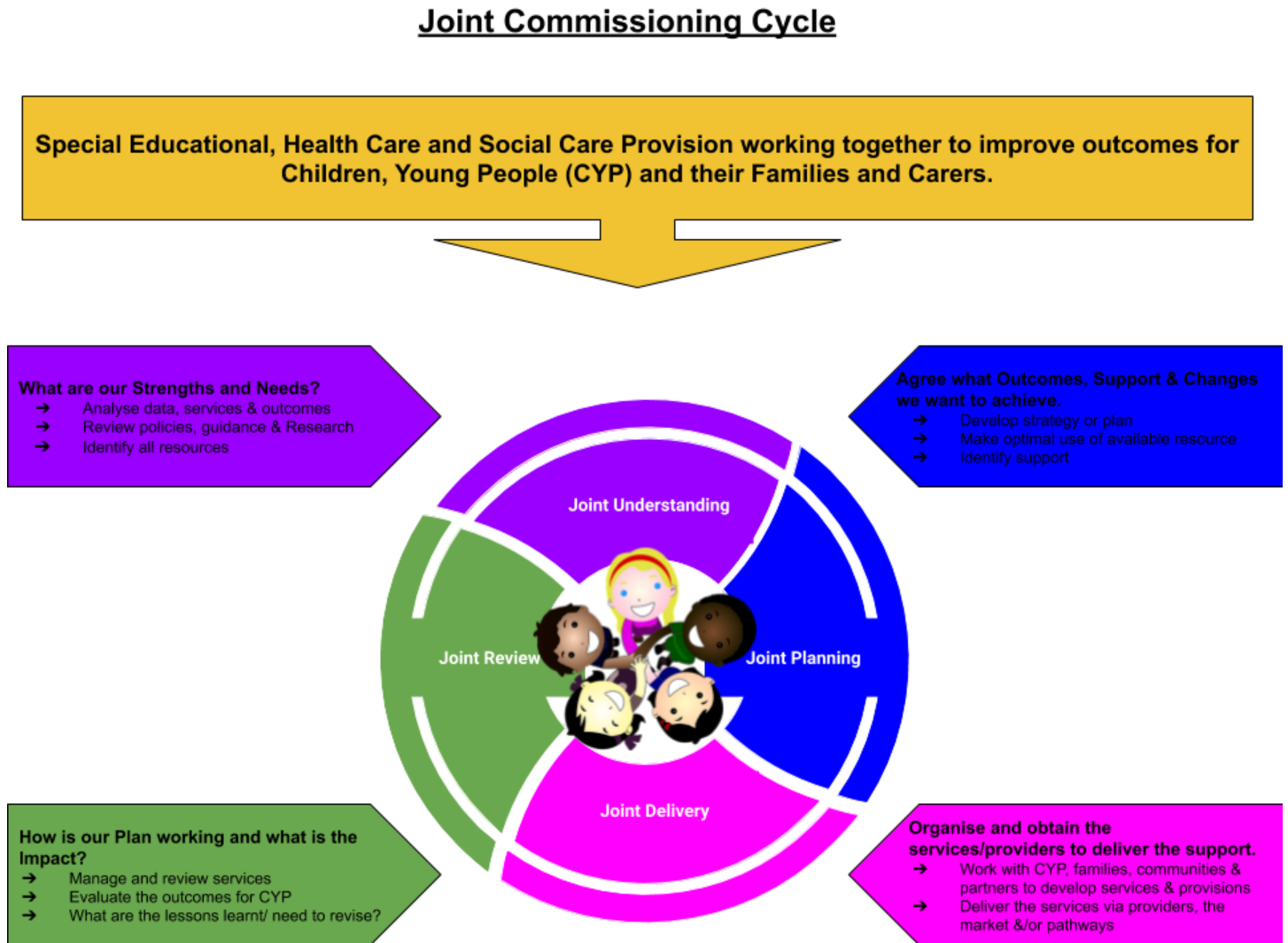


	<p>core, works together and with families to understand and respond to children and young people’s needs in a coherent way, with each partner contributing to robust assessments, plans and funding arrangements, and monitoring the impact of their services and support. There is a focus on working better together for children and young people with SEND who are also vulnerable in other ways, including those who are looked after, missing education, excluded from school, or at risk of exploitation and criminal behaviour.</p>
<b>Quality</b>	<p>Provision is high quality and delivered by well trained and supported professionals who work effectively together and use evidence to inform their work, promote resilience and achieve positive outcomes for children and young people with SEND. Services that cannot demonstrate this positive impact are re-provided or re-commissioned.</p>
<b>Inclusion</b>	<p>The community is supported to meet the needs of all children and young people by embracing diversity and inclusion, so that all children and young people with SEND have the same opportunity as their peers to play, learn and grow-up all together in their local community.</p>

### **3. What is Joint Commissioning?**

Joint commissioning is the process to decide how all resources available are used together to improve outcomes efficiently, effectively, equitably and sustainably for the children, young people and their families and carers we provide services to. By Local Authorities, NHS Clinical Commissioning Groups, Public Health and our wider partners jointly working to commission special educational, health care and social care provision together; we can ensure our children, young people and families access high quality services that support meeting their needs. While also ensuring we achieve the best possible value for our collective resources.

Fig 1: Our diagram showing the joint commissioning cycle.



### 3.1 What are we jointly commissioning?

Collectively, education, health and social care will agree how we will work together to provide personalised integrated support to deliver positive outcomes for our children and young people, We will achieve this by:

- Bringing together support across education, health and social care from early childhood

through to adult life (0- 25 years)

- Improving our planning for transition points between early years/school/college, children's and adult social care services and between paediatric and adult health services
- Raising aspiration and increasing focus on improved life chances

### **3.2 How will we do this?**

We will collectively work to maximise the tools of commissioning by using the commissioning cycle at all three levels of delivery; individual, community and strategic.

**Individual commissioning** – co-production between young people, parents, carers and support brokers. Lead professionals. Budget holders.

**Community and operational commissioning** – targeted commissioning for groups and/or communities, groups of parents/carers/young people pooling budgets, self-directed support.

**Strategic commissioning** – joint strategic plans to set future direction, allocating resources, performance management, review, development of supporting infrastructure. In consultation with children and young people, parents and carers key recommendations will be made at the SEND Partnership Board following consultation at the RBK and LBR parent consortiums and CYP engagement groups. Joint commissioning decisions for AFC and SWL CCG will also follow internal governance processes.

### **3.3 Co-Production**

Co-producing commissioning means equally involving people who use services, carers, families and communities throughout the commissioning cycle, placing our families at the centre of what we do. Co-production within commissioning also includes working with providers of services to make sure they deliver services in a co-produced way.

Co-production is an integral part of the joint commissioning process and our joint commissioning strategy sets out how we will strengthen co-production over the next 3 years to achieve our vision.

### **Understanding Local Need**

#### **4. What has informed our Joint Commissioning Strategy?**

Joint commissioning is a continuous improvement cycle. As stated in the Code of Practice for SEND (2014), over time, partners may shift the focus of their activity as the needs of the local population change and delivery of services improves. Joint commissioning must include arrangements for:

- Agreeing Personal Budgets
- Securing EHC needs assessments
- Securing the Education, Health and Care Provision specified in EHC plans
- Co-ordinating advice and information provided by Education, Health and Care partners to SEND pupils
- Effective complaints procedures
- Procedures for resolving CCG and Local Authority disagreements
- Effective partnership working
- Commissioning decisions informed by children and parents
- Prevention
- Early Identification
- Better access to services
- Consideration of universal services; co-production with children's and adult's social care
- Effective transitions to adulthood; and working together to reduce Out of Area placements

#### **4.1 The Joint Strategic Needs Assessment**

Public Health is the strategic lead for the Joint Strategic Needs Assessment and a process is in place for this assessment to be renewed. The Children & Young People's Needs Assessment has recently been updated and it has been agreed to complete a dedicated SEND JSNA which is due for completion by March 2020.

RBK: <https://data.kingston.gov.uk/jsna/>

LBR:

[https://www.richmond.gov.uk/media/10997/joint\\_health\\_and\\_wellbeing\\_strategy\\_2016-21.pdf](https://www.richmond.gov.uk/media/10997/joint_health_and_wellbeing_strategy_2016-21.pdf)

We will complete a SEND Self-Evaluation audit that will draw upon the JSNA as well as the

experience of children and young people, parents and carers, and the network of statutory and voluntary sector partners.

The Outcomes and Performance Framework provides an outcomes dashboard for every meeting, which gathers the measures that the partnership has agreed are most relevant to understanding the outcomes of our children and young people, and the performance of key services. Following the LGA SEND Peer Challenge in LBR, there is a greater emphasis upon sharing these outcomes across our local area. We will also be working with the SEND partnership board on revising and improving the outcomes framework.

<https://kr.afcinfo.org.uk/pages/local-offer/information-and-advice/send-consultation-hub-and-resource-bank>

Our assessment of individual children and young people's needs are set out on the local offer website, both in respect of an EHC Needs Assessment and in respect of lower levels of need.

### **Richmond-upon-Thames and Royal Borough of Kingston SEND Local Offer**

The SEND Local Offer provides information on local services and support available for families including children and young people aged 0 - 25 years with special educational needs or disabilities. This is accessible in one easily searchable website (link below), we encourage feedback on our website to support us improving access and information on the SEND Local Offer website to ensure the information reaches those who need it.

Link to the SEND Local Offer: [https://kr.afcinfo.org.uk/local\\_offer](https://kr.afcinfo.org.uk/local_offer)

#### **The SEND Local Offer outlines public services that are available within:**

- Education: e.g. nurseries, playgroups, schools and colleges as well as support services like educational psychologists, early years and early intervention workers
- Health: e.g. GPs, paediatricians, school nurses and therapists
- Social care: e.g. respite services and children's disability services
- Preparing for Adulthood
- Participation and Involvement
- Learning and Resources
- Details of the statutory processes



## Working in Partnership

### 5. Co-production & Engagement

Our approach to understanding local needs and the impact of service provision is centred upon a commitment to engagement and co-production with children and young people, and their parents and carers. We believe that a range of methods are necessary in order to secure the widest and most comprehensive picture of how children and young people experience the support that is offered to them and/or how they would like it to be.

These methods include:

- Use of the Local Offer to gather views and feedback
- Use of formal and informal consultations, including coffee mornings
- Facilitation of focus groups with children and young people in schools, colleges and other settings
- Service-specific tools and methods to gather ongoing feedback from children and young people about their experiences and satisfaction
- Supporting young people to share their stories and experiences directly in meetings, conferences or through training
- Involving young people in the recruitment of staff (Recruits Crew)
- Collaborative working with our Parent Carer forums and wider SEND community representatives

#### 5.1 Advice and Information

We aim to ensure that there is clear advice and information available for children and young people, families and professionals, and that help is easily accessible when people find it difficult to understand what may be available.

- The Local Offer website both provides the full range of information on local services and processes to secure help, as well as links of professionals that can be contacted if families need some direct advice and information.
- Richmond and Kingston Special Educational Needs and Disabilities Information Advice and Support Service (SENDIASS) is a free, confidential and impartial service for parents

and carers, children and young people (up to 25 years).

- Richmond and Kingston has a thriving voluntary sector, including services which are able to offer general advice and advocacy support (for example RUILS and Skylarks) as well as more specific or specialist advice and support (for example MENCAP and ADHD Richmond and Kingston). All these voluntary organisations are engaged with the Council, CCG and AfC through the Children & Young People with Disabilities and Learning Disabilities Forum which meets quarterly.
- The SEND Participation Team provides advice, support and tools for professionals around creating information in a format that is accessible to children and young people with SEND. The SEND Young People's Easy Info. Group reviews and critiques a wide range of information and gives advice about how to improve it.

## 5.2 What Families tell us

We have varied ways in which we gain involvement and feedback from our families, more information can be found on the link below.

<https://kr.afcinfo.org.uk/pages/local-offer/information-and-advice/participation-and-involvement-activities>

- I don't want to have to tell my story lots of times to lots of people
- We need to improve the way we communicate and reach more families directly
- TBC

What families would like:

- TBC

## 5.3 What Children and Young people tell us

We have varied ways in which we gain involvement and feedback from our children and young people, more information can be found on the link below.

<https://kr.afcinfo.org.uk/pages/local-offer/information-and-advice/participation-and-involvement-activities>

- We know how it feels to be us
- Don't assume things about us – get to know us
- Don't make us feel like problems that need to be solved
- Tell us what's going to happen, when and why – this makes us less anxious



- Don't make us explain our whole health history over and over again
- When we are adults, we have to make choices and decisions, so it is really important you help us to learn how to do this as children
- Listen to us, it's about us, it's not about you!

In March 2020 the outcome of a dedicated workshop with our children, young people and families on developing a multi-agency outcome framework to support CYP with SEND was completed.

The CYP *draft* outcome statements:

1. I am listened to and people hear what I have to say
2. I am safe and my vulnerabilities are understood
3. I am as healthy as I can be
4. I would like to be as independent as possible
5. I am ambitious and achieve the best I can
6. The people who love and care for me are supported

## **6. Key Achievements**

We recognise that delivering services for our children and young people with SEND is a continual journey of improving, reviewing and changing to meet needs. We are learning from what children, young people, families and services tell us. Some of the highlights of our achievements include:

- Completion of the therapies review
- New short breaks provision for families
- A joint commissioning role (AFC & CCG)

## **7. Key areas for Development**

Our joint commissioning strategy sets out our priorities to plan and provide services to improve the outcomes for children and young people across their health, education and social care needs.

## **Our Joint Commissioning priorities**

### **Priority 1: Service Development**

Further development of our emotional health and wellbeing, speech and language therapy, occupational therapy, physiotherapy services.

### **Priority 2: Pathways**

Improve and further develop joint seamless pathways between Health, Education and Social Care for CYP and their families.

### **Priority 3: Partnership Working**

Ensure better partnership working and integrated approaches to improve outcomes for children and young people and ensure value in the services we provide.

### **Priority 4: Response to Need**

Ensure we continue to apply the views of children, young people, their families and carers to shape the services we deliver.

### **Priority 5: Future Focus**

Further developing and supporting the arrangements for Personal Budgets and Personal Health Budgets and Transitions from children's services.

Our five priorities underpin our SEND futures plan.

## **8. Governance**

The diagram below shows the governance in place to oversee the work we do within SEND commissioning. This governance ensures we follow the commissioning cycle at every stage and provides scrutiny and oversight in relation to the delivery of our plans. Our governance involves:

- Reporting to the Health and Wellbeing Board.
- Council Governance Committee role, both decision making and Scrutiny.
- Inspection by Ofsted and CQC.
- Parents, Carers, Children and Young People involvement/

oversight.

- Partners internal governance process.

## SEND Governance

