

Hygiene Makaton Signs

Wash hands



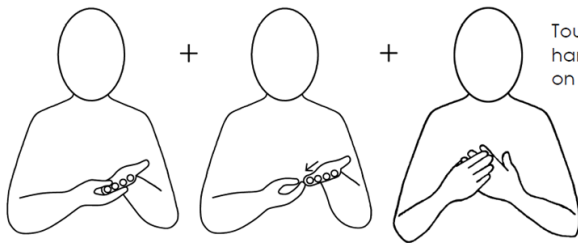
Mime washing hands

Soap



Move across palm, back and forth to mime lathering soap

Dry hands



Touch back of hand and repeat on other hand

Repeat on dominant for both hands

Cough



Sneeze



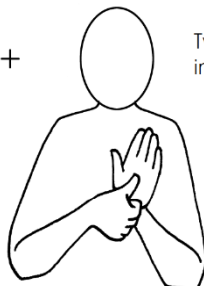
Breathing problems

Palm, flat on chest, moves gently away from and back



+

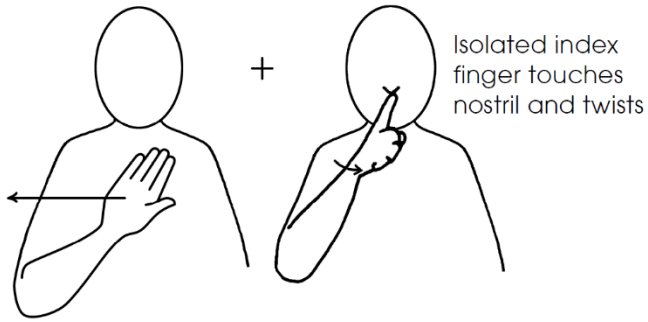
Twist thumb into palm



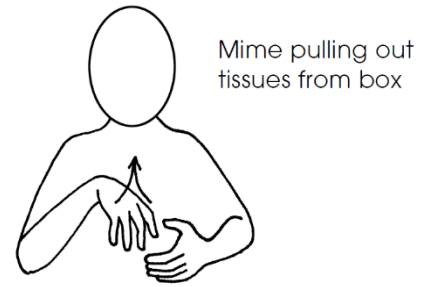
Fever



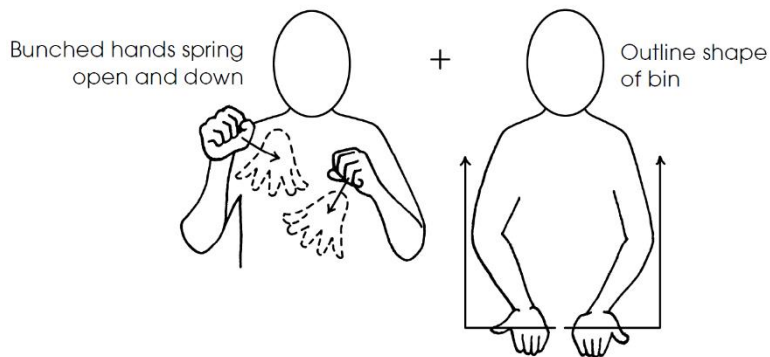
Don't pick your nose



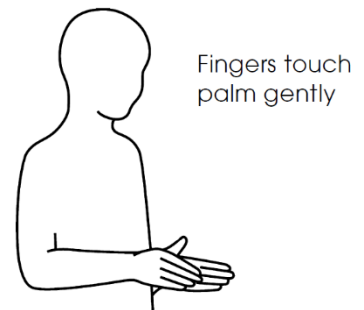
Tissues



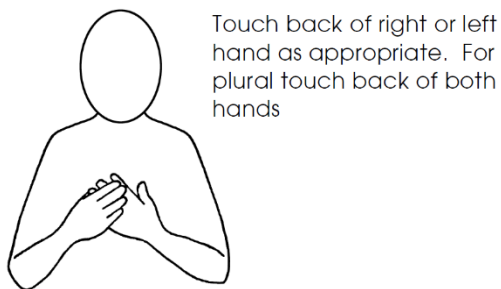
Bin



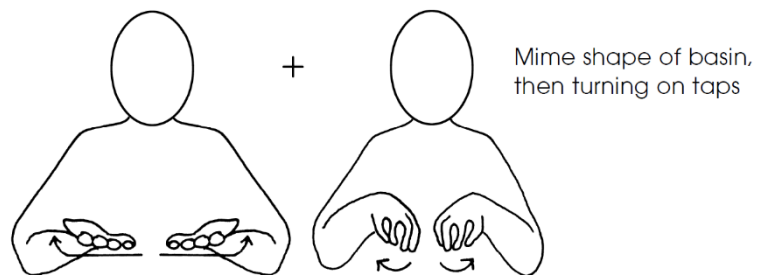
Touch



Hands



Wash basin



Clean



Dirty

