

**SEND Partnership Board**  
**February 2019**  
**Written Statement of Action**

---

**Charis Penfold – Director of Education Services**



**achieving  
for children**

# 4 years on – What was reported?

17-21 September 2018 – Local Area SEND inspection for RBK

- Our self-evaluation is broadly accurate, but we have made insufficient progress in implementing the reforms
- Overall too many children and young people with SEN and or disabilities do not receive the support and provisions to meet their needs
- Leaders have a vision and desire to improve life chances but the vision is too far from becoming a reality
- EHCPs are not good enough – health and social care professionals not contributing or checking, outcomes and provision lack specificity, process too education focused and needs increased health and social care input
- Amendments to plans following annual reviews are not systematically updated
- Leaders do not use JSNA effectively
- CCG does not have effective oversight of the delivery of services for children and young people with SEN and or disabilities

# Written Statement of Action - Kingston

The local area is required to produce a written statement of action to Ofsted that explains how the local area will tackle the following areas of significant weakness:

- The overall poor quality and monitoring of EHC plans, including contributions from health professionals
- The timeliness of leaders ensuring that the annual review process and any subsequent amendments to EHC plans are consistently made in line with the SEN code of practice
- The strategic leadership of and monitoring of the CCG's work in implementing the 2014 reforms
- To ensure that there is a productive and positive relationship between parents and parent representatives, including a parent carer forum

# Update on Kingston WSOA

- Draft completed by CCG and AfC and submitted – 8/2/19
- Ofsted will sign final copy off
- First monitoring Visit 13/2 – DfE and NHS England
- Progress towards 4 WSOA is ongoing – both CCG and AfC
- Performance dataset is developing – SEND performance data, Service User feedback, Workforce updates and CCG input
- Governance through SEND Partnership Board and within AfC and CCG
- Richmond readiness across summer term – SEF completed for September 2019

# SEND Transformation Plan

## SEND Partnership Board

---

7th February 2019



**achieving  
for children**



THE ROYAL BOROUGH OF  
**KINGSTON**  
UPON THAMES

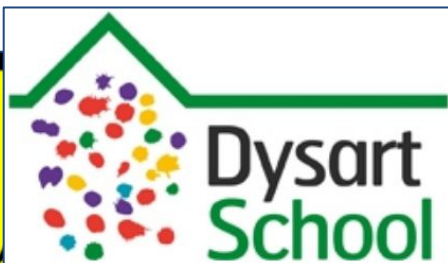


**Kingston**

Clinical Commissioning Group

**SEND Futures**  
Education, Health and Social Care

The past 11 months



# Five key issues are addressed over the next 3 years

1. New approaches to early intervention so that children with SEND are supported to remain in mainstream schools
2. Increasing the range & quality of local education, health and care provision for children and young with SEND
3. Improving business insight and implementing more commercial approaches to the commissioning of SEND placements and support
4. Engaging all stakeholders, including all parents and carers, in reforming the SEND system and changing attitudes and behaviours
5. Promoting independence and strengthening transition for children and young people with SEND through school phases and into their adulthoods

# A need for strategic change

## **1: Strategy and Governance**

Ian Dodds - Chief Executive, Achieving for Children

## **2: Commercial Thinking**

Lucy Kourpas - Finance Director, Achieving for Children

## **3: Local Provision**

Pauline Maddison, Director of Children's Services, Kingston Council

## **4: Early Intervention and Transition**

Jo Sullivan-Lyons, Strategic Lead: Educational Inclusion, AfC

## **5: Assessment and Planning**

Charis Penfold, Director of Education Services, Achieving for Children

## **6: Home to school travel**

Eamonn Gilbert, Associate Director for Commissioning, Achieving for Children

# The consultation

- open from 13th December to 20th January
- advertised via:
  - direct mail & email (families\* and children, young people and adults)
  - websites and social media
  - voluntary sector, early years providers, schools, college networks
  - school governor information service



\*

all families with EHCP and /  
or Disability Register

**SEND Futures**  
Education, Health and Social Care

# The consultation

Method / Participants	
Survey (online and easy read)	95*
Community drop in events (x3)	26
Children and young people focus groups (12)	136
Young adults 1:1 interviews	
<b>Total</b>	<b>257</b>

\* 87 parents / carers  
7 schools  
1 voluntary sector



## **257 people told us their views on support for people with SEND.**

SEND means Special Educational Needs and Disabilities.

They told us about:

- 1) Learning
- 2) Feeling safe
- 3) Emotional wellbeing
- 4) Feeling included
- 5) Support
- 6) Friendships
- 7) Environment
- 8) Information
- 9) Rules, rewards and sanctions
- 10) Participation
- 11) Adulthood



# Next steps

- Deliver on parental participation and co-production
- Continue to meet with DfE on WSOA and TP
- Continue with Council Committee process
  - Children's and Adults' Care and Education
  - Council
  - Health and Wellbeing Board
- Publication of Transformation Plan, early April
- Subsequent iterations of the Transformation Plan
- Publication of new SEND Strategy, August
- Additional regular consideration at:
  - Clinical Commissioning Group Governing Body
  - Children's and Adults' Care and Education
  - Schools Forum
  - Partnership Board

# Progress report

---



**achieving  
for children**

# What's working well?

- Outcomes for children and young people are positive
- Transformation infrastructure is mostly up and running
- Education Inclusion Service established
- Reform of annual review processes underway
- Expansion of specialist places advanced
- Council transformation funding confirmed
- Growth expenditure is slowing
- Greater sense of shared responsibility and ownership

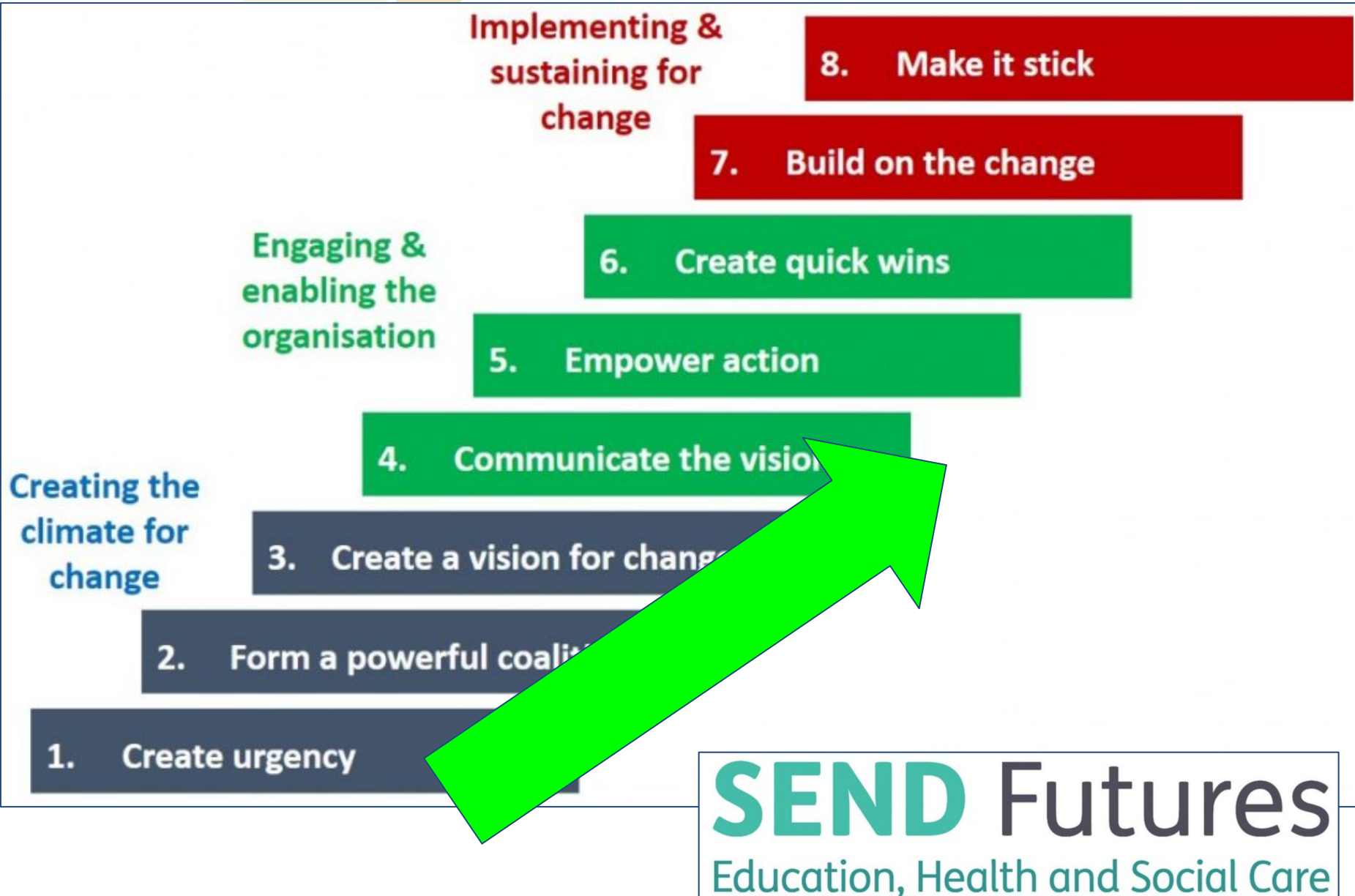
# Worries?

- Parental engagement improvements need more pace
- Overspend reduction goals are challenging
- Transformational change resources including therapy
- Overall pace of decision making process
- Schools Block & High Needs Block relationship
- Number of EHCPs continues to grow at same rate
- A universal priority?

# Where are we?



# Where are we?



SEND Transformation is everybody's business



# SEND Transformation is everybody's business



# Questions?

---



**achieving  
for children**