



Towards a culture of Coproduction

Catherine Ratcliffe -Associate for Contact
Jayne Fitzgerald - RPCF Strategic Manager

27th June 2019

Towards a culture of Coproduction



Aims of Session:

- ▶ Brief overview - Our Story - Rotherham Parent Carer Forum
- ▶ Why? Rationale? - Explore our understanding of co-production
- ▶ Core Elements- Consider what it is that puts the child or young person and their family at the heart of all you do
Genuine Partnerships - Embedding the cornerstones - Think about the differences that can be achieved working in this way
- ▶ Quality Indicators Activity - Richmond & Kingston Reflect on your next steps





What is a Parent Carer Forum?



1.13 Parent Carer Forums are representative local groups of parents and carers of children and young people with disabilities who work alongside local authorities, education, health and other service providers to ensure the services they plan, commission, deliver and monitor meet the needs of children and families. Parent Carer Forums have been established in most local areas and local authorities are actively encouraged to work with them.

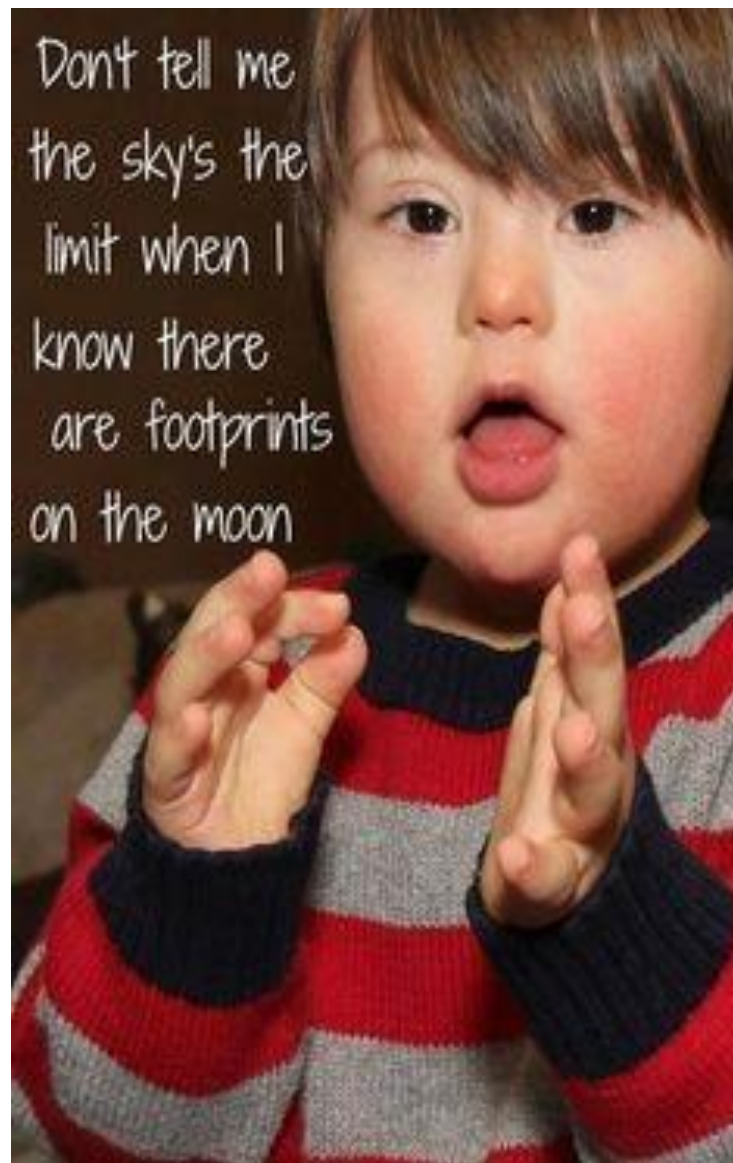
SEND code of Practice 2014

- 1 North East & Cumbria
- 2 Yorkshire & Humberside
- 3 North West
- 4 East Midlands
- 5 West Midlands
- 6 Eastern England
- 7 London
- 8 South East
- 9 South West



Parent Carer Voices

- ▶ 1 parent and 1 child with lived experience leads to:
- ▶ 1500 local voices
- ▶ 16,000 regional voices
- ▶ 92,000 national voices
- ▶ 92,000 families with lived experience feeding into shaping policy through NNPCF





Rotherham Parent Carers Forum



A registered charity run by parent carers of children with additional needs for families of children with additional needs





Rotherham PCF



- ▶ For an overview of our work, please see our website - www.rpcf.co.uk
- ▶ Social Events and Activities
- ▶ Advice and Support Drop in Sessions
- ▶ Training and workshops
- ▶ Wellbeing
- ▶ Peer Support Service
- ▶ Parent Participation/Co-production



Commissioned Contracts and Service level Memorandum of Understanding

- ▶ *The Children and Families Act 2014 places a legal duty to involve parent carers in how services for disabled children are delivered.*
- ▶ RPCF hold 2 contracts with RMBC - Short breaks and Voice and Influence shaping policy via the lived experience of families.
- ▶ RCCG have a contract with RPCF to provide a CAMHS/Emotional Wellbeing Peer Support Scheme
- ▶ MOU with individual services -Sendiass, Act, Healthwatch.....



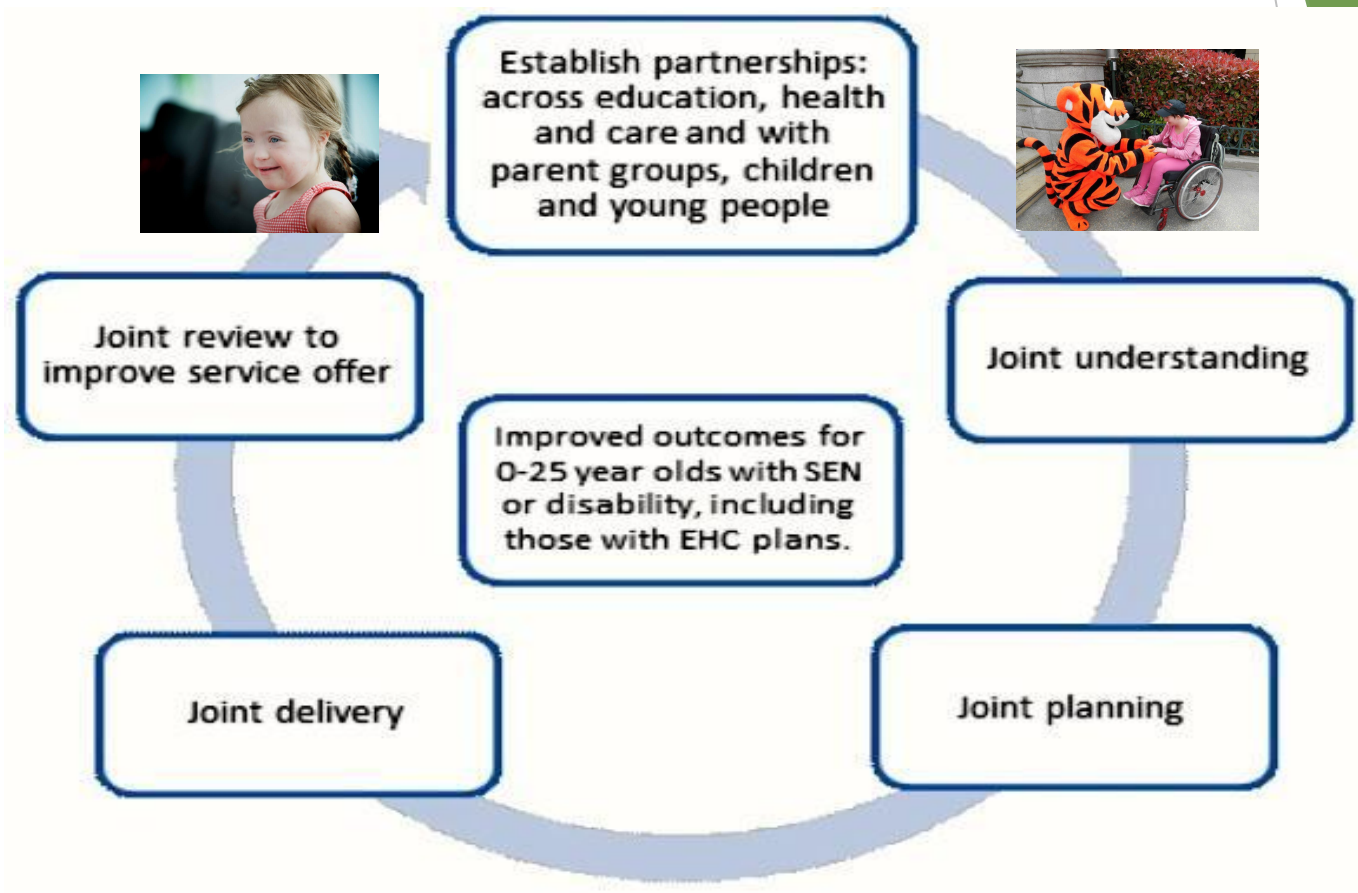
Partnership with local Services

- ▶ Service specification reviews- coproduced
- ▶ Cornerstones in all new specs /recruitment
- ▶ Meeting every 6 weeks with LA & CCG commissioner
- ▶ SLA/Contracts
- ▶ MOU's
ACT/AFST/Sendiass/EPS
- ▶ Weekly drop in (apptments), EPS, CAMHS, LSS, Sendiass, Cerebra,
- ▶ Strategic engagement /operational to director



The Joint Commissioning Cycle

Chapter 3 SEND Code of Practice



Creating TRUST through Co-production: The Rotherham Charter Principles

Co-produced and Co-delivered





Charter Principles

► **Welcome and Care**

What do we do well already?

► **Value and Include**

How could it be better?

► **Communication**

How could we involve all parents and children in embedding this?

► **Partnership**



Rotherham Charter for Parent and Child Voice

Self-Monitoring Document

1st Edition - March 2011

www.rgfl.org/parentandchildcharter



Rotherham Charter for Parent and Child Voice

Toolkit for Schools

1st Edition - March 2011

www.rgfl.org/parentandchildcharter



Special educational
needs and disability
code of practice:
0 to 25 years



Building Trust by Promoting Equal Voice
Genuine Partnerships

Rotherham Charter Gold

Appreciative Enquiry

Despite frustrations, the **NEED** of the child and family has to remain at the heart of what we do

- What do we do well?
- What would make that better?
- Open honest communication that leads to solutions



SEND Reforms: setting out to change relationships





- ▶ 'If you want to know how well a pair of shoes fit
- ▶ you ask the person wearing them,
- ▶ not the person who made them, or who paid for them.'

Co-production: How?

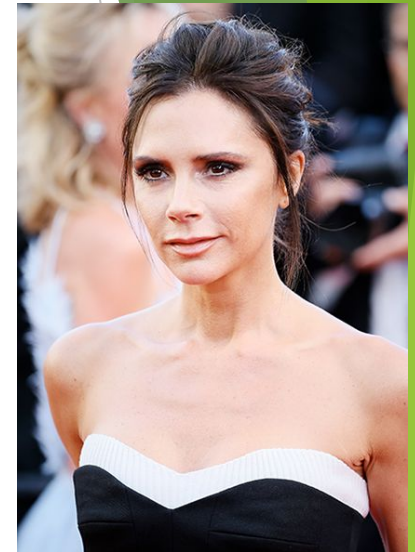
1. Theory/evidence base

- ▶ Action research
- ▶ Systemic practice/use of narrative and collaborative approaches
- ▶ Social constructionist perspective
- ▶ Positive psychology
- ▶ Appreciative inquiry, asset based
- ▶ Restorative way of working
- ▶ 'Not knowing'
- ▶ Be human

Who would you choose/not choose?



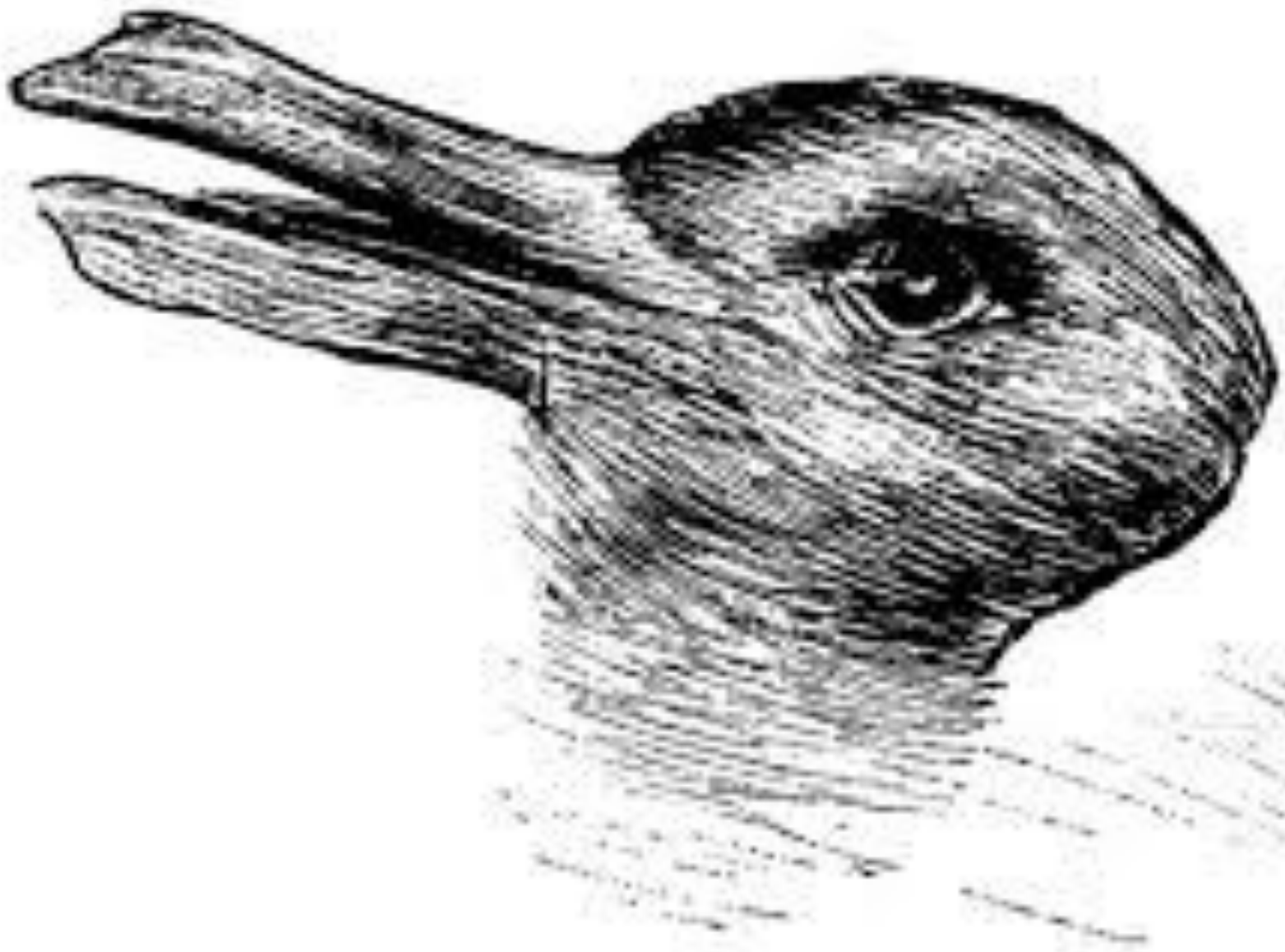
We all have social constructs



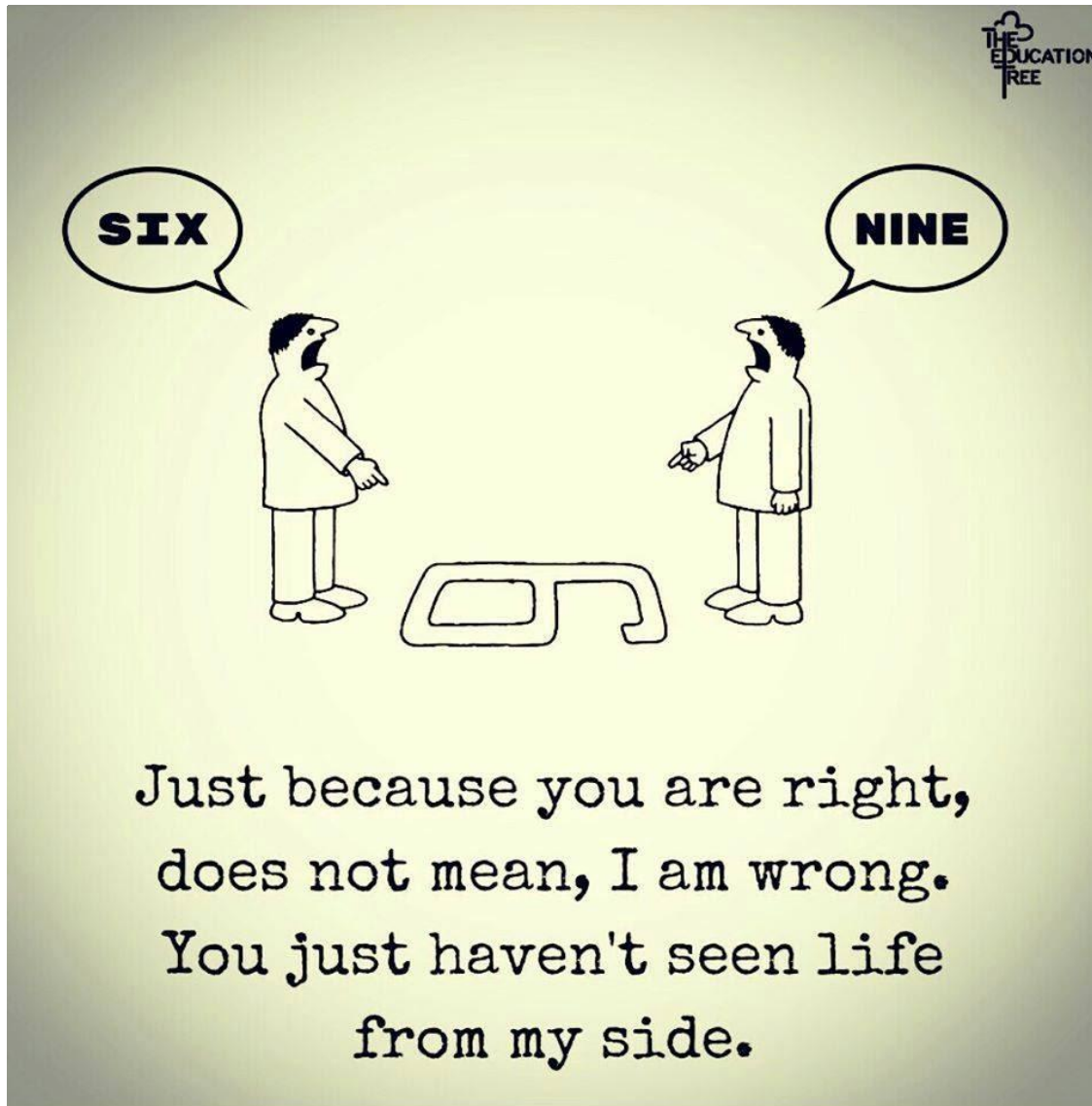
You might have social constructs about...

- Cucumber sandwiches
- Dog lovers
- Classical music
- Universities
- Burglars
- Tattoos
- School





Perspectives





Acknowledge different Perspectives?

Family

- Fear
- Needs led
- Exhausted
- Feelings of failure CMC
- Battling for rights
- Different planet
- Family life - -
- Our life and your living



Services

- Capacity
- Funding
- Exhausted
- Job satisfaction
- Limited to what we commission
- Desire to get it right
- My Job not my life





the **power** of words

can move you to tears, evoke absolute **joy** or lead you in action.

there are words of encouragement, of sympathy, of **love**

& admiration. the right words can give you **strength**, define your *faith*, give flight to things that live in your **imagination**.

Words will **inspire** you, cut you, bring you back to life.

They will comfort you in your time of need. words will

nourish your soul.



The impact of Language and the Native Tongue of SENDland

My disabled child

- ▶ Has a placement
- ▶ Uses special transport
- ▶ Accesses a mainstream activity
- ▶ Is in transition
- ▶ Has annual reviews
- ▶ Has siblings
- ▶ Requires intervention
- ▶ Has peers

My non disabled child

- ▶ Goes to school
- ▶ Gets the bus
- ▶ Goes swimming
- ▶ Is moving up to college
- ▶ Has parent's evenings
- ▶ Has brothers and sisters
- ▶ Requires help and support
- ▶ Has friends



Points to Consider

- ▶ How can the language we use serve as:
 - A barrier to people's understanding of a child or young person?
 - An enabler to get the support a child or young person requires?



Ladder of participation



Co-production

Participation

Consultation

Information

Equal Partnership

Consultation

Co-production



Information

Participation

How working in this way makes a difference

- ▶ *"The Charter represents a wonderful achievement in working in partnership and delivering a clear set of entitlements and expectations for parents and professionals to work towards." (Brian Lamb)*
- ▶ *"The Rotherham approach helped me to move my thinking on from co-production to think differently about implementation of working with families" (SEND leader, NDTi SEND Leadership course)*
- ▶ *"I feel grateful for being given the opportunity to speak...coming here today has made me feel better about myself..." (Young person, Lincolnshire)*
- ▶ *"Valued the brilliant input from you all - just hope Nottingham City Council take this on board - listen to parents, listen to views" (VOICES parent, Nottingham City)*



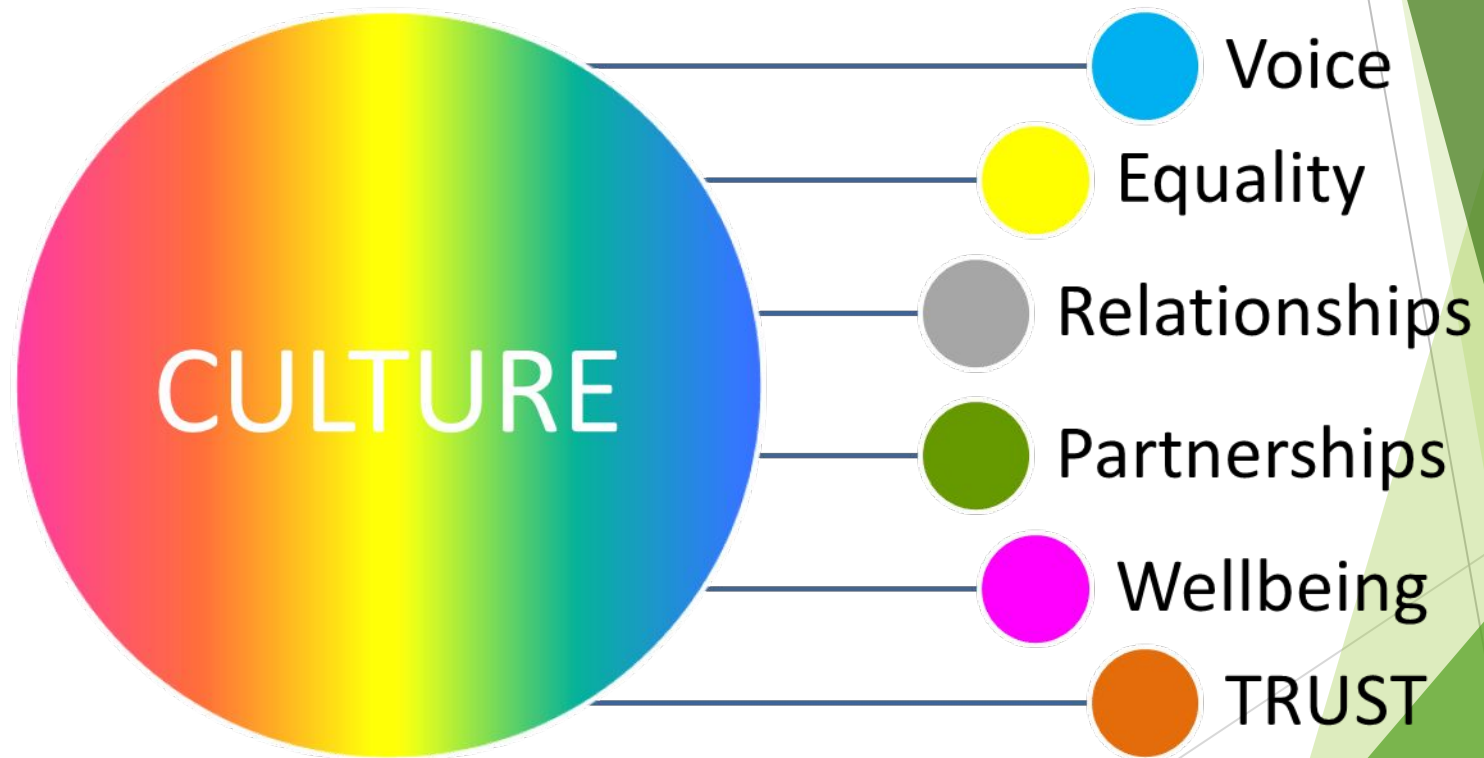
CDC Service specification review

- ▶ The 4 Cornerstones of Coproduction (welcome and care, value and include, communication and partnership) have been developed into 11 quality indicators specific to the CDC. These have been written as a series of commitments to children and families
- ▶ Model to base future service specification reviews on...next one is complex nursing and specialist school nursing

Charter Gold



Quality Indicators for Inclusive Practice and Co-production



Co-production: How?

2. In practice

- ▶ Make it everybody's business
- ▶ Enable space to listen, and then listen
- ▶ Give choices
- ▶ Be human
- ▶ Value every contribution
- ▶ Be interested
- ▶ Embed in systems
- ▶ Be happy to put yourself out
- ▶ Build confidence in you, systems and themselves
- ▶ Plan for things to take longer and be messier
- ▶ Avoid making assumptions
- ▶ Value the positive relationships, processes and outcomes that arise

The reason why we navigate the maze....



Partnership and co-production creates better outcomes

Thank you

‘I’ve learned that people will forget what you said, people will forget what you did, but people will never forget how you made them feel.’

Maya Angelou

www.rpcf.co.uk

@rpfl5



Thankyou.....

On behalf of over
1200 families
for all you do for
our children
and young people
in Rotherham
every day



Any Questions?

