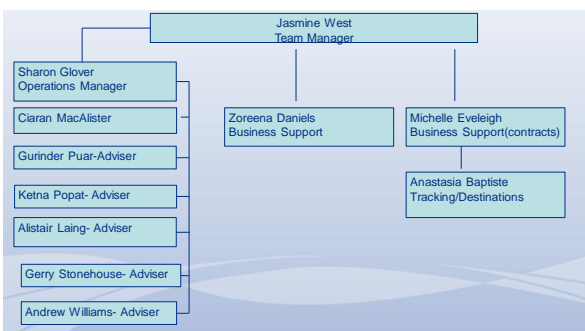
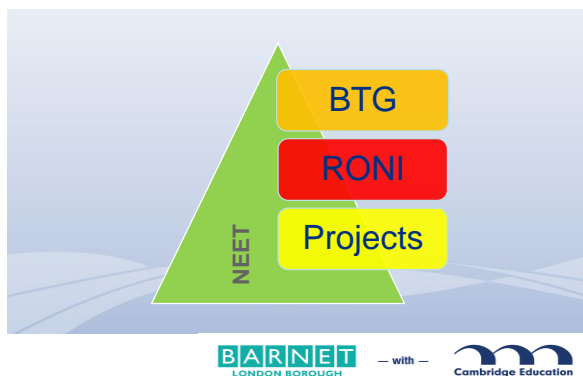
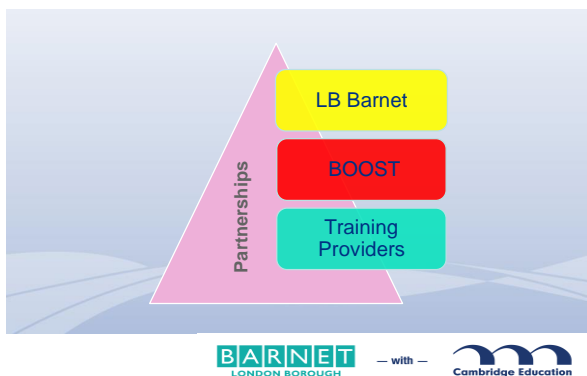


Post 16 Education & Skills Team





## Main Options after YEAR 11

- Staying at school ( academic/vocational courses)
- Going to College( vocational/ other courses)
- Apprenticeships and Traineeships
- Employment with training

## Apprenticeships

- Earn while you learn
- Nationally recognised qualification at the end of the apprenticeship
- Functional skills i.e. English and Maths
- Not just craft level; now L1 – L7
- Can be a route to a degree
- Learn job specific skills
- Wide range of entry requirements
- Large number employment sectors offer apprenticeships



Register on:  
[www.apprenticeships.org.uk](http://www.apprenticeships.org.uk)

## Traineeships

- A course offering employment preparation moving into work or apprenticeships
- With a college or a training provider
- Can be up to six months but usually shorter
- Includes a substantial work placement
- Usually unpaid – but may be some allowances

## SEND/ LDD Options College?

**Barnet & Southgate College**  
Supported learning Programmes

**CourseLink**

**Work Path**

**College Path**

**Skills Path ( Pre Vocational)**

**Skills Path ( Complex needs)**



**Alternative Offer of Employability Based Programmes for Young People with Learning Disabilities/Learning Difficulties/ Autism**

**Public Health England**  
**PROJECT SEARCH - SUPPORTED INTERNSHIP**  
**Mencap**  
**SUPPORTED INTERNSHIPS**  
**TRAINEESHIPS**  
**Harington Scheme**  
**Supported Training Programmes**  
**Vocational Skills ( Horticulture/Retail)**  
**Foundational Skill( Choices/employability)**



**Project Search**  
**Public Health England - Colindale**

This **Project SEARCH Work Training Programme** is a collaborative venture between key partners: **Public Health England, Barnet & Southgate College, Tottenham Hotspur Foundation, and London Borough of Barnet**. The goal is to provide on-site practical work training, for young adults with special educational needs to gain work skills, leading to competitive paid employment.

The entry requirement:  
 • aged 18-24 on the 1st September in the year of the programme  
 • Education, Health and Care Plan in place.



**Mencap**  
**Supported Internships**  
**Traineeships**

A full-time study programme lasting 12 months, including a work experience placement – usually about 6 months. The programme also provides a job coach to help interns learn on the job, plus group work opportunities to learn from one another and develop social skills.

**Who is the programme for?**

This is open to people with a learning disability aged 16-24 with an Education, Health and Care (EHC) plan, who also:

- would like to find a job
- will be ready for work after completing the programme
- live in the London borough of Barnet
- will be able to travel independently by the end of the programme (Mencap can provide travel training to help with this)



**Harington Scheme**

The Harington Scheme provides a unique opportunity for young adults with learning disabilities and/or difficulties, delivering individual learning programmes designed to help them into employment, further education or a more rewarding life.

