

Integrated Adolescent Centred Approach – Seeing The Whole Child



**Sally Joseph, Head of Looked After Children and Care
Leavers & Care Provision**

Eugene Griffin, Head of Integrated Youth Services

Derek Dyer, Team Manager Looked After Children

Hannah Burdett, Advanced Practitioner

London Borough of Camden

About Camden



Number of staff

4138

Total spend

£912 million

Population Camden

243,100



- **50%** of all children living in Camden are from minority ethnic groups, compared with 21% in the country as a whole
- **61%** of children in Camden primary schools have English as an additional language alongside **51%** in secondary schools against national averages of 20% and 16%
- **3rd largest** population 'churn' in the UK
- **19%** of the population aged under 18 (approx. 48,000)
- **60.4%** of Camden's children are aged 4-16
- **26.6%** of children live in low income families, the **4th highest in London**

14-18 year old children within our services

We increasingly find that children who are in contact with children's services are aged over 14

We have fewer children in care but **133 or 70.7% are now aged 14-18**

There are **221 children in need** who are aged 14-18 who are children in need (**33.1% of the total cohort**)

Increasingly the **14-18 year old age group are on child protection plans** due to their vulnerability to multiple risks (**19.5% of cohort**).

There are **66 children aged 14-18** within the Youth Offending Service (**97% of the cohort**)

There are **113 children aged 14-18** within Youth Early Help service (**75% of the cohort**)

At **mid-2019** it is projected there will be **8,978 14-18**

year olds in Camden. *Source: GLA 2016-based Projections @Camden Development, Capped AHS', © GLA, 2018*



What do we want to share today?

A strategic overview

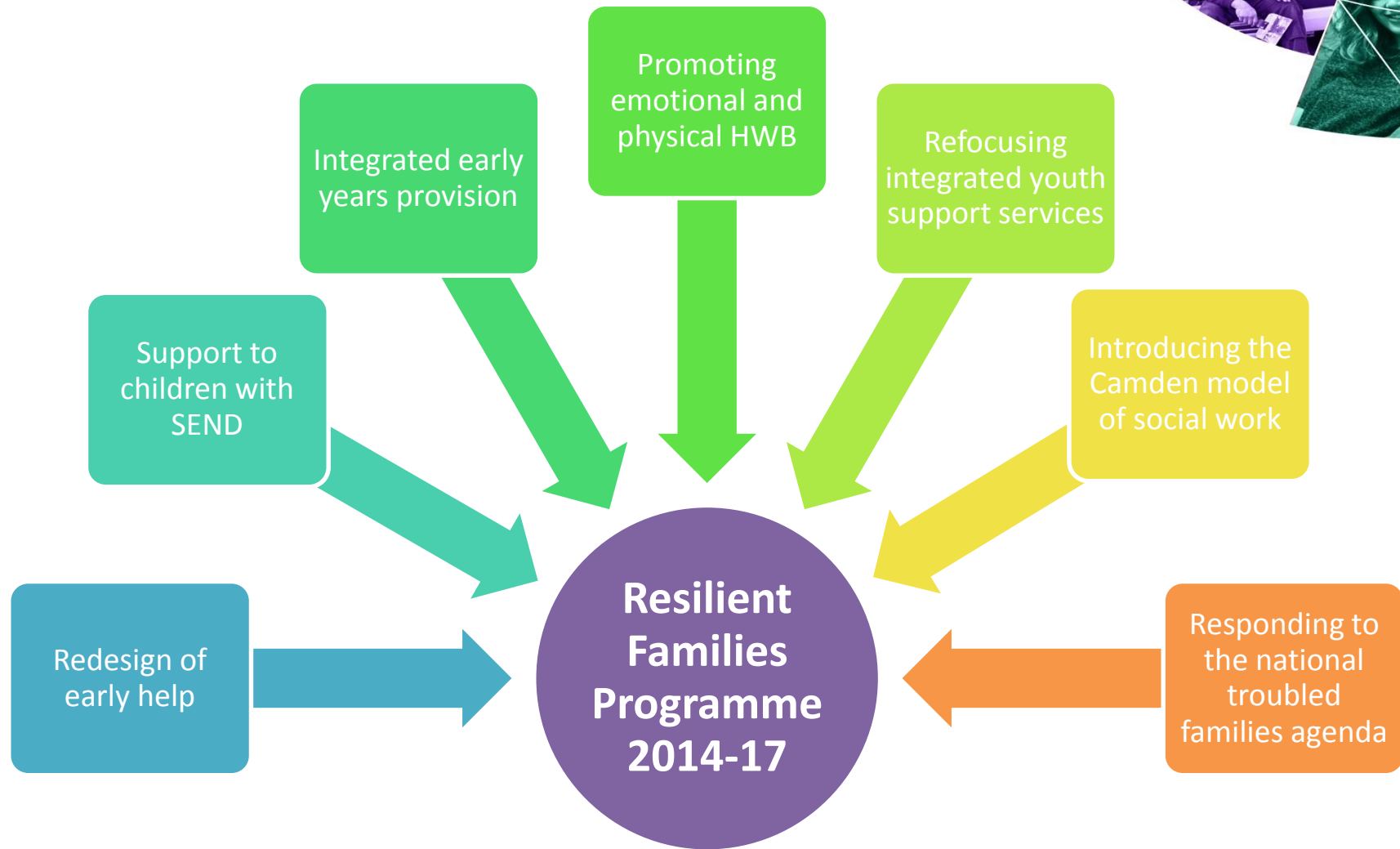
- How we **collaborate** with children and families to get the best outcomes for them and how teams who work with adolescents **co-operate** with each other within our Resilient Families framework
- We need the child and family at the centre, we need each other and we need our partners

The direct work

- What social workers and youth workers are doing in creating trusted **relationships** with adolescents and their families through strengths based and systemic practice

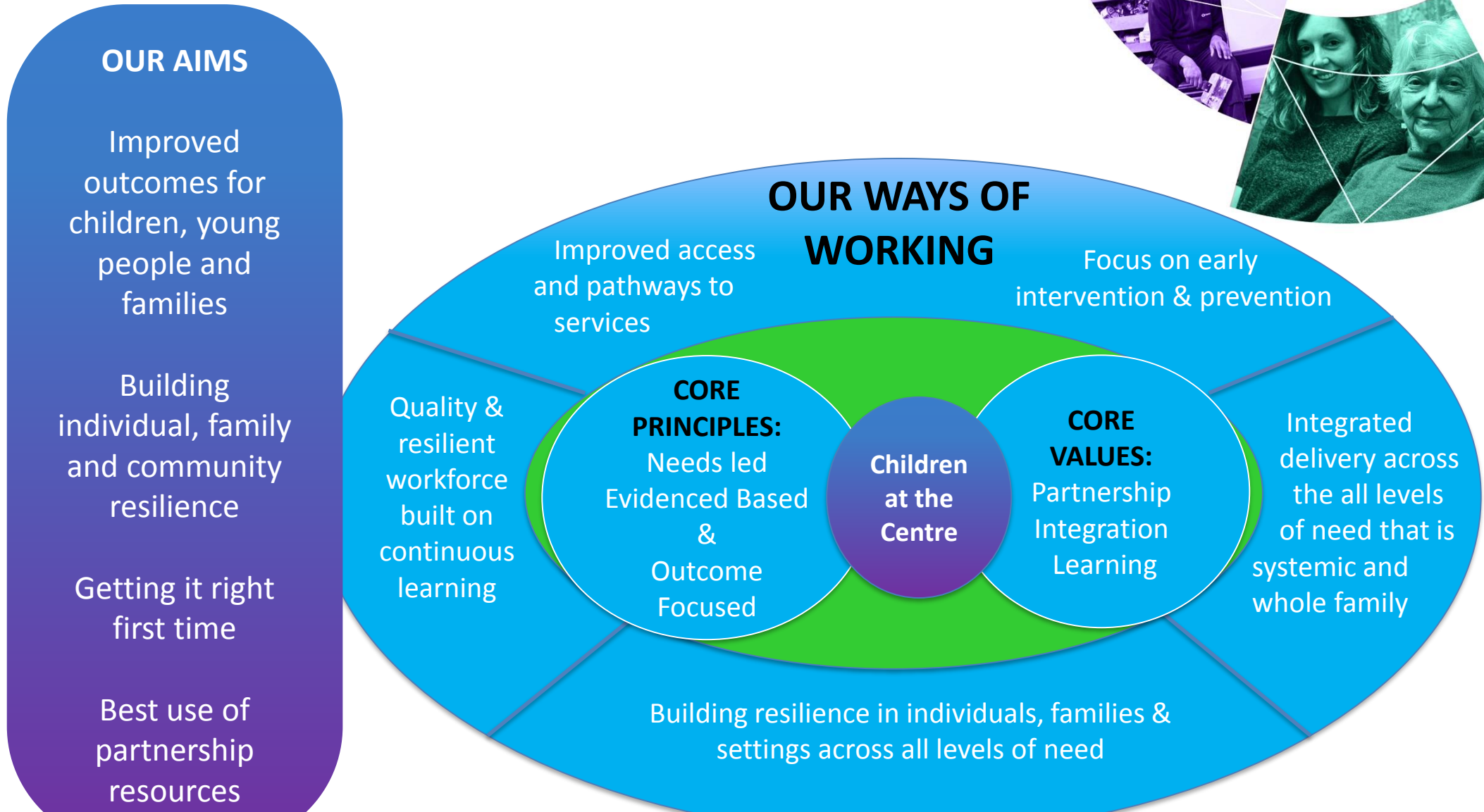


Leading whole system change



SHIFTING THE CENTRE OF GRAVITY

Reimagining our Children's Services



At your tables can
you write about
significant
experiences and
influences that were
in your adolescence



Pressures on young people



Innovating across the system



Integrated Adolescent Centred Approach

Testing a preventative multi-agency approach with 10 to 13 year old children in need to stop problems escalating in the teenage years or identify a need for care earlier to improve long-term outcomes

Model of support for adolescents aged 14 to 18 who are subject to multiple risks such as CSE, radicalisation, gang involvement and county lines

Co-design of a method of intervention for all disciplines to engage effectively with adolescents who experience complex risks



Right Balance for Families

A family led and relationship based method

All families are offered a family group conference which will agree what needs to change, how this can be achieved and who is the best person to work directly with the child and their family which is recorded in a plan written by the family.



A team co-ordinated by the social worker

Able to develop innovative solutions to effect lasting changes for children and their families through a multi-disciplinary team including CAMHS, teachers, youth workers, mediators and mentors. Systemic reflective meetings are held with the network and families sometime join these.



The “Virtual school” model of additional educational support

Access for children for specialist staff work with the child's school to ensure there is additional support for their educational progress.



Engagement of families with Right Balance is positive so far with 64% agreeing to take forward a family group conference.

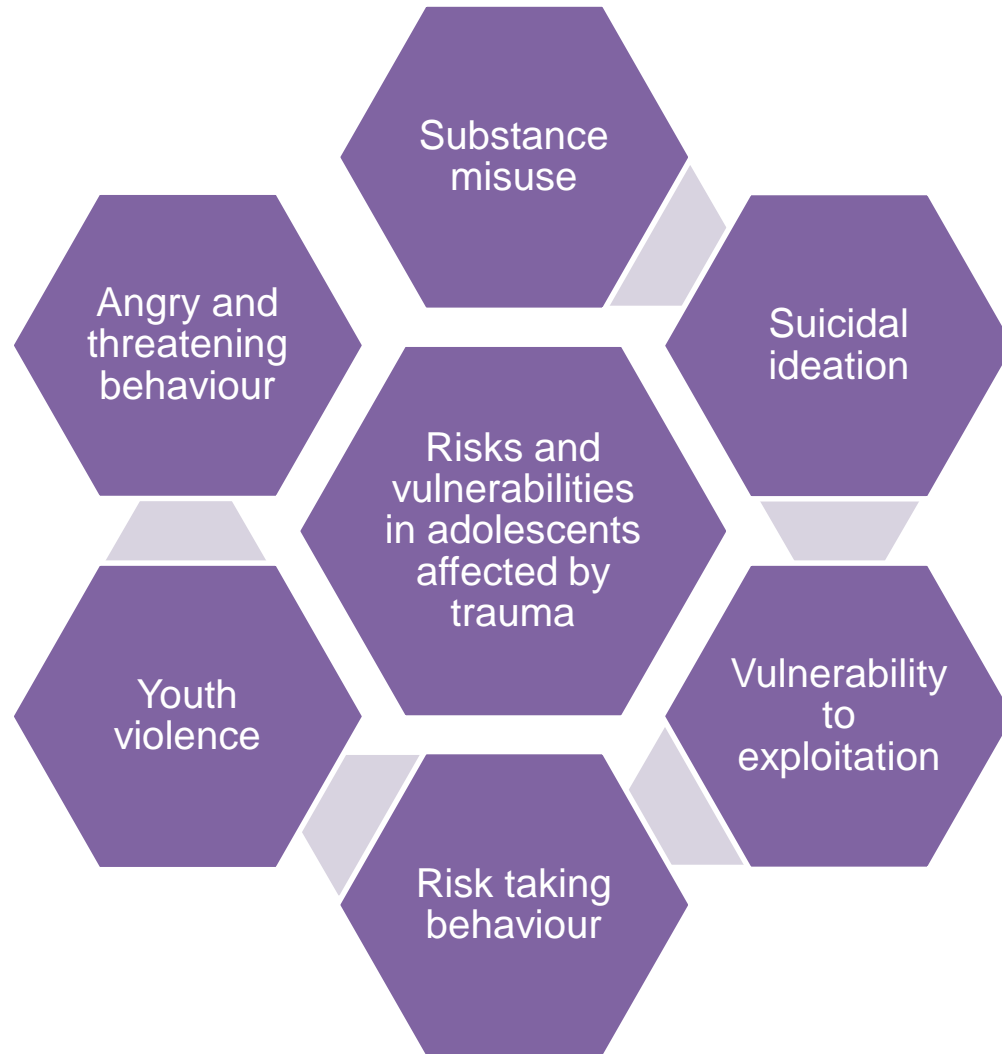
The model is received by both families, social workers and other professionals. As families are co-producing their goals as well as their own solutions this changes the nature of the conversation.

We undertook an analysis of 26 children within the project to understand what impact it is having on their outcomes.

53% have seen improvements in Maths and English and 37% report improved emotional wellbeing

Understanding trauma

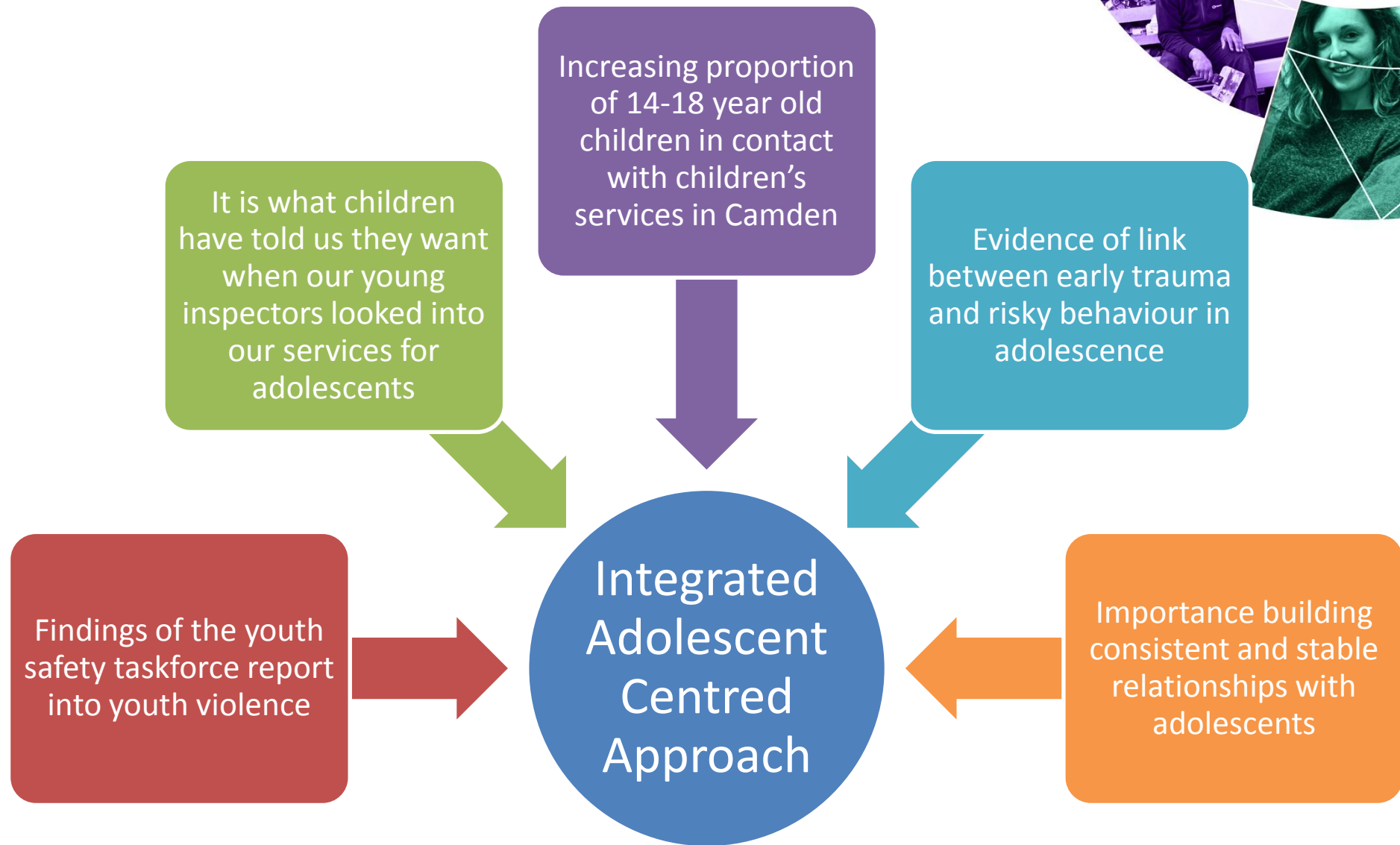
The most vulnerable young people who are at the most risk have normally experienced trauma in their childhood. Help for professionals to recognise and work with the impact of trauma in young people is a key recommendation of Camden's youth safety taskforce.



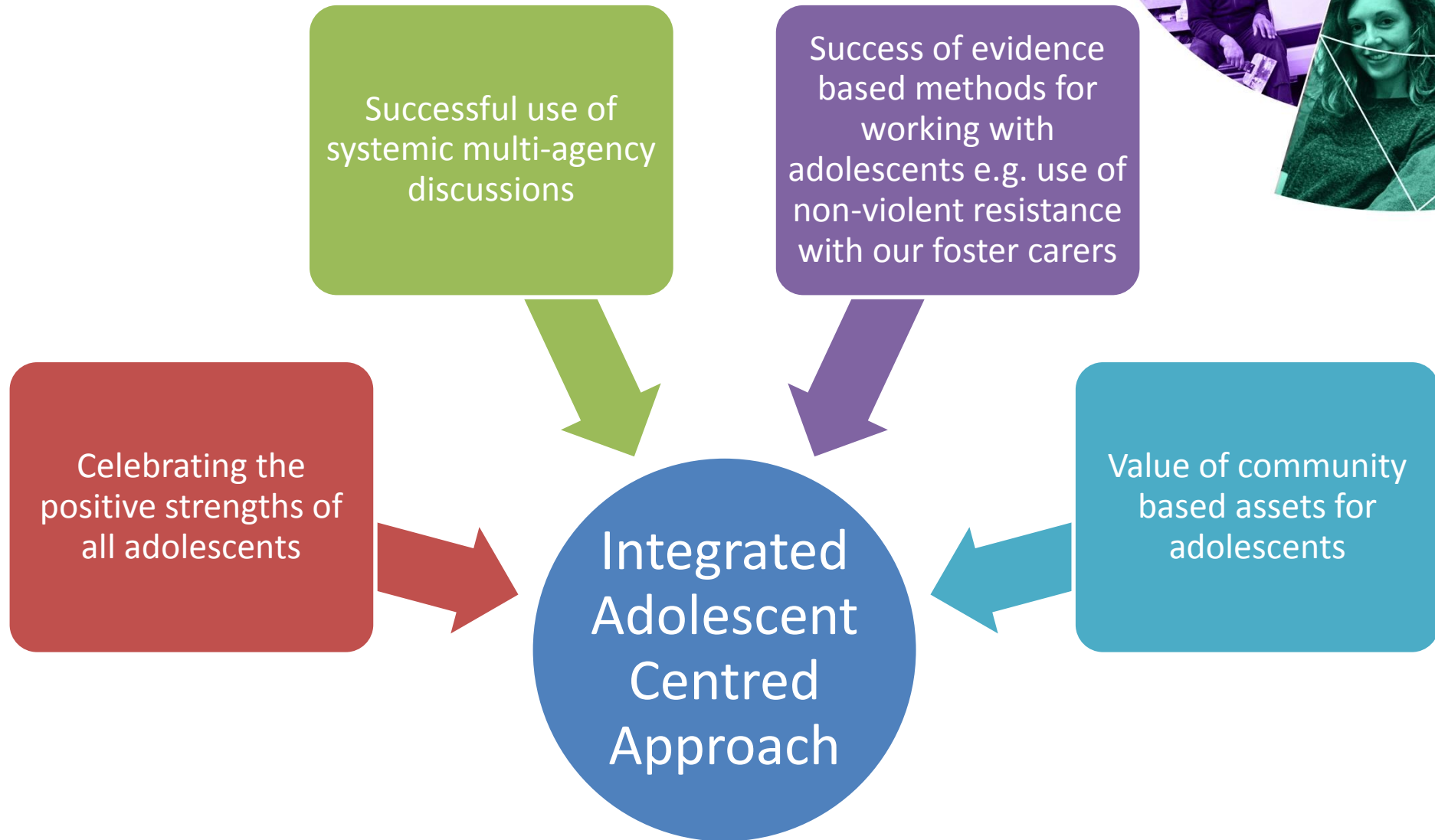
Our integrated adolescent centred approach



Why are we developing an integrated adolescent approach?



What do we hope to develop upon with our approach?



What did adolescents tell us when we consulted with them?

Our Young Inspectors are children and young people who scrutinise our services. They carried out an inspection into services for adolescents.

Adolescents told us they would more of the work with them to be based in their local communities

They want consistent relationships and recognition of their strengths and more work with them and their parents to help them develop better relationships.

The adolescents who were involved in the consultation were very concerned about the impact that trauma can have for children and adolescents.

The youth safety taskforce found that it is often the most-vulnerable adolescents who are most at-risk of youth violence and have suffered significant trauma in their childhood.



How do young people feel?



<https://vimeo.com/307490441/50fdb7d068>

What do staff want from the approach?

Complexity of adolescents means that everyone has to share responsibility - desire for a more integrated multi-agency approach to respond to the individual needs of children

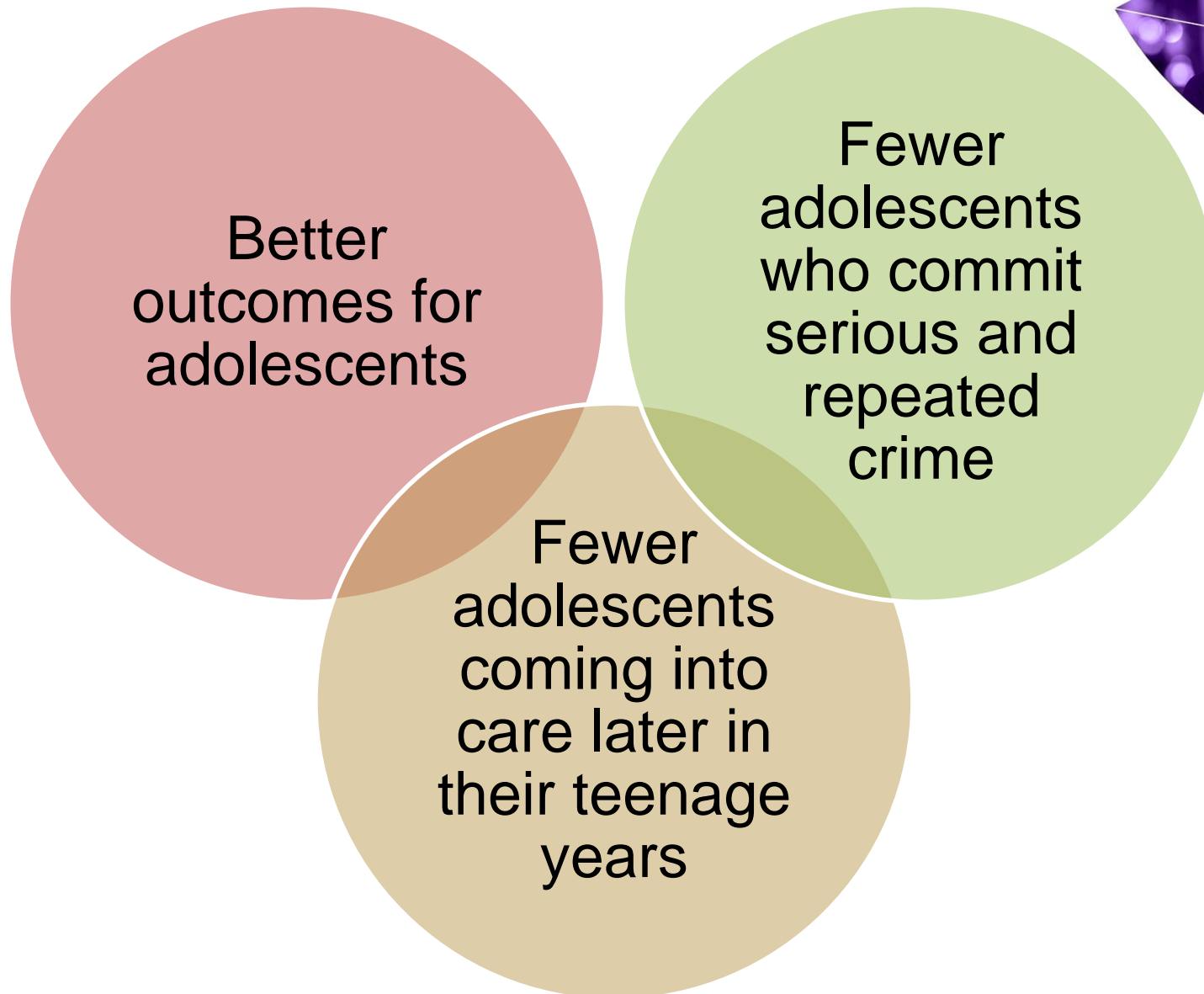
Changing the way professionals see adolescents - identification of their strengths and resilience, as well as risk.

Working with adolescents can be challenging— want to build opportunities to build trust and share responsibility as professionals across the network

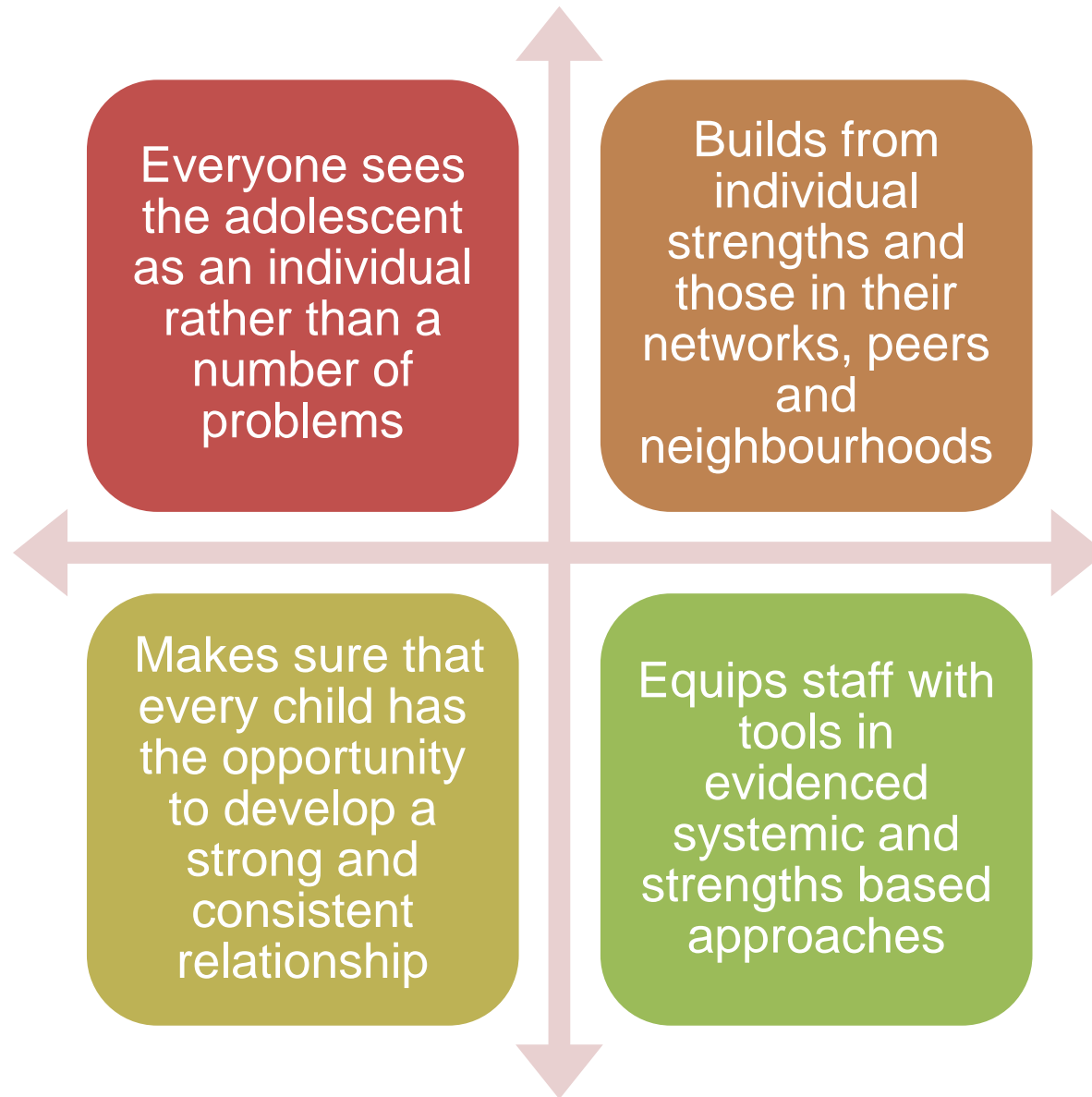
It's not just about adolescents – need more tools to work with complex dynamics with their families and peers and improve integration into community based services and schools



What do we want to achieve?



Our approach



What have we done so far?



Taken forward the recommendations from the Youth Safety Taskforce and the Young Inspectors on services for adolescents

Trained staff in the Camden Model of Social Work and the Resilient Families frameworks of relationship based practice

Held co-design workshops with staff from across social work and youth services to develop thinking about how we work with adolescents and develop the training programme

Started a bespoke programme of training to develop the basis of a toolkit of interventions to draw upon when working with adolescents who have been affected by trauma and face complex and multiple risks

What next for our approach

Identified group of professionals from across youth and social work supported by staff from the Tavistock and Portman NHS Trust to take forward the work to support progress in practice and identify organisational obstacles to achieving a child centred approach

Ensuring that the key relationship is at the centre of all work that we do and this is at the heart of all forums where we meet to talk about adolescents

Checking with adolescents and stakeholders that we are doing the things they asked for

Further development of a toolkit of identified interventions for all staff who work with adolescents to use in their practice which are strength based and respond to the impact of childhood trauma

Developing mutual support and building professional trusting relationships across the network and ensuring that our strategic framework supports these



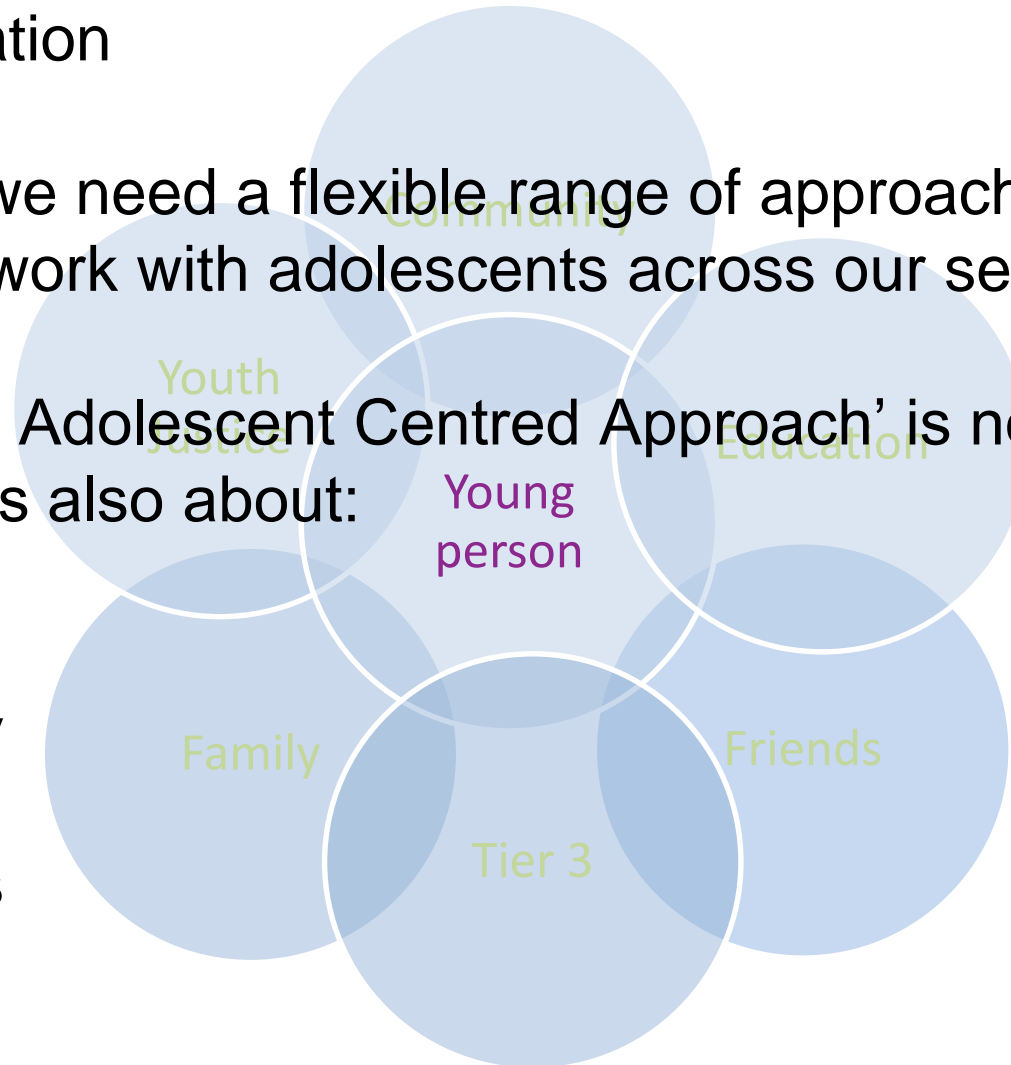
Putting our approach in Context

What works with adolescents (and their families) in one context doesn't necessarily work in another situation

We know that we need a flexible range of approaches to support our work with adolescents across our services

The 'Integrated Adolescent Centred Approach' is not just about adolescents. It's also about:

- Parents
- Wider Family
- Peers
- Communities
- Systems



Any questions
for us?