

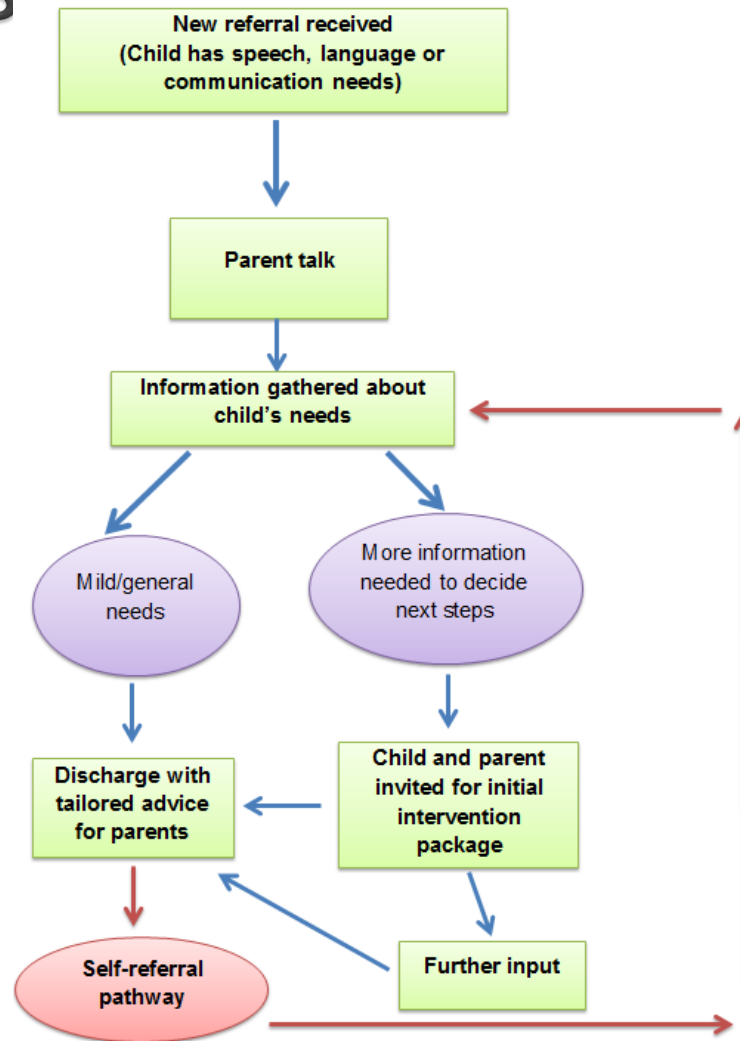
**Georgina Brown**

**[georgina.brown@hrch.nhs.uk](mailto:georgina.brown@hrch.nhs.uk)**

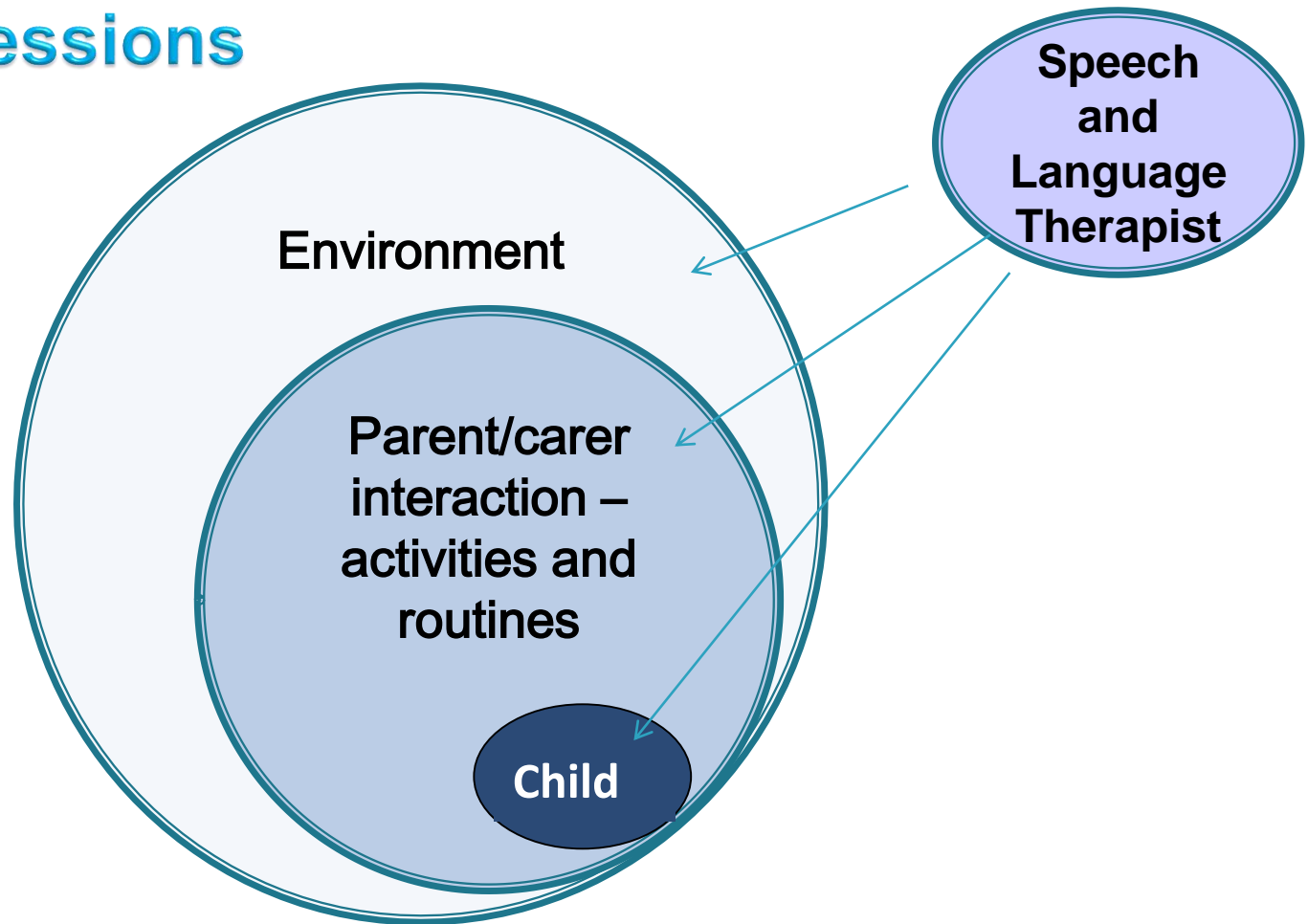
**0208 614 5456/5333**

Richmond Speech and Language Therapy  
Early Years Service

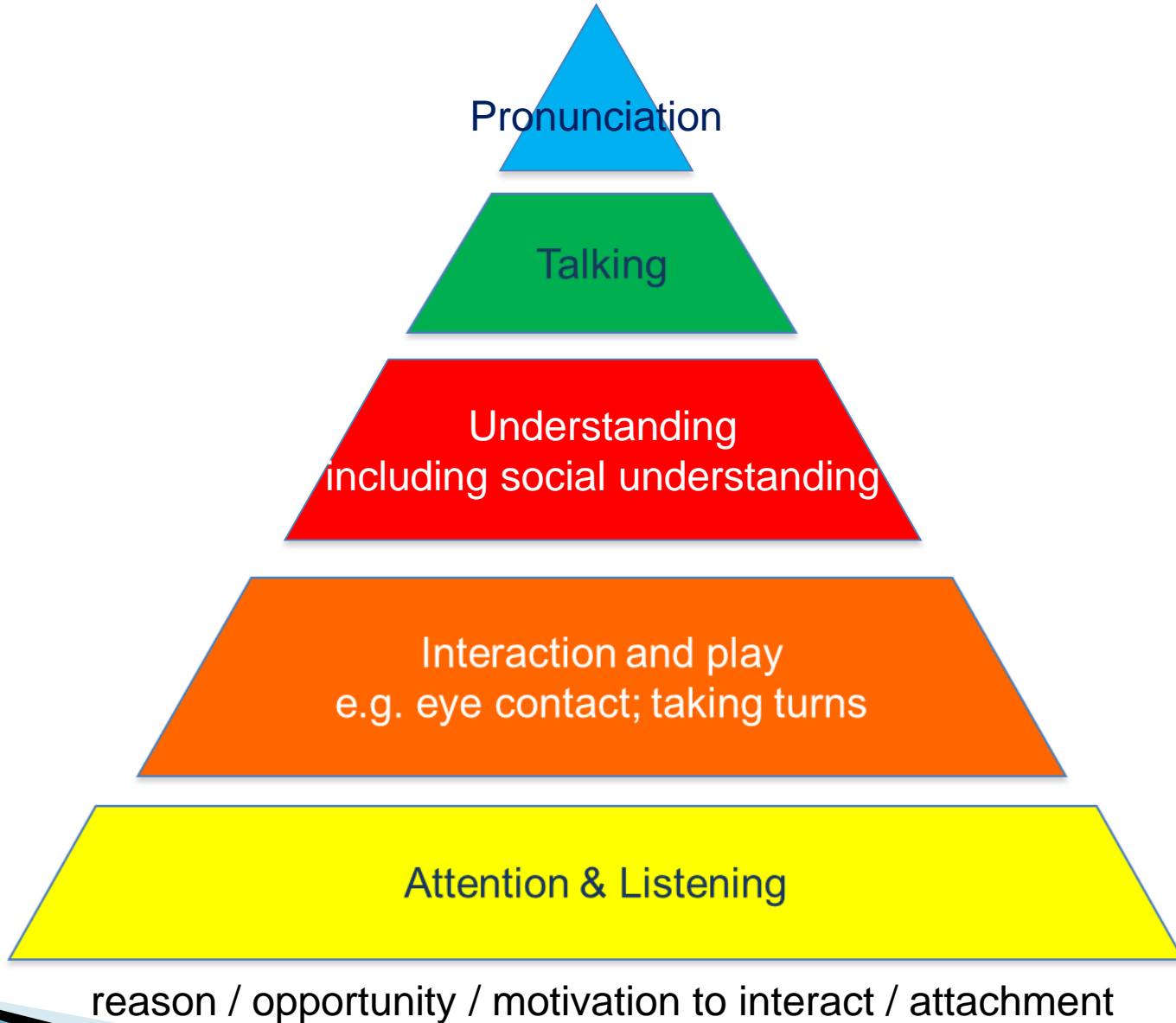
# How the Richmond service works



# What to expect if your child is offered therapy sessions



# COMMUNICATION PYRAMID






**BILINGUALISM  
INCREASES  
ACADEMIC  
POTENTIAL**



**BILINGUALISM  
ENCOURAGES  
TOLERANCE OF  
OTHERS**



**BILINGUALISM  
IS AN  
ADVANTAGE**



**BILINGUALS  
FIND IT EASIER TO  
LEARN  
LANGUAGE/S**



**BILINGUALS  
THINK MORE  
CREATIVELY**



**BILINGUALISM  
INCREASES  
CAREER  
OPPORTUNITIES**



**BILINGUALS  
HAVE INCREASED  
SELF ESTEEM**



[www.bwrdd-yr-iaith.org.uk](http://www.bwrdd-yr-iaith.org.uk)



# Advice for parents



Telephone Advice Line (TAL) - information and advice given to parents/carers via a call back from a speech and language therapist; if necessary we can take a referral via this route.

Nurseries can ring the TAL too - we can give advice but we wouldn't be able to take a referral from you over the phone as we need parental consent.

# Advice and referral information for settings

Referral form and advice available on our website

<http://hrch.nhs.uk/our-services/services-directory/services-in-richmond/slt-children-richmond/>

**Georgina Brown**

**NHS SLT Early Years Coordinator**

[\*\*georgina.brown@hrch.nhs.uk\*\*](mailto:georgina.brown@hrch.nhs.uk)

**0208 614 5456/5333**

# Useful Websites

- ▶ **Literacy Trust: Talk to Your Baby**
- ▶ Advice sheets on many different topics, which can be printed out
- ▶ [http://www.literacytrust.org.uk/talk\\_to\\_your\\_baby](http://www.literacytrust.org.uk/talk_to_your_baby)
- ▶ **Hanen:**
- ▶ Information on Parent Child Interaction
- ▶ <http://www.hanen.org/About-Hanen/Hanen-for-Parents.aspx>
- ▶ **ICAN: Talking Point**
- ▶ Lots of useful tips for parents
- ▶ <http://www.talkingpoint.org.uk/en/Parent.aspx>
- ▶ **Bilingualism**
- ▶ [www.londonsigbilingualism.co.uk](http://www.londonsigbilingualism.co.uk)

