



Supported Learning



kingston-college.ac.uk
carshalton.ac.uk

Supported Learning at Carshalton College and Kingston College



Focus on outcomes



- During the first 4 weeks we assess all learners to ensure that their chosen study programmes will enable them to work towards their outcomes and a starting point is identified.
- These outcomes are taken from EHC Plans and learner aspirations declared at interview and review
- Students with learning difficulties and/or disabilities are sometimes less likely to understand what is required to achieve a positive outcome, particularly those with complex learning issues.
- Our study programmes allow us to individualise learning.
- Appropriate qualifications are combined with outcome focussed targets to ensure that each learner programme will work towards an agreed progression route to their aim.
- We provide high quality and flexible learning programmes that take account of a wide range of learner needs as well as the requirements of external partners and stakeholders

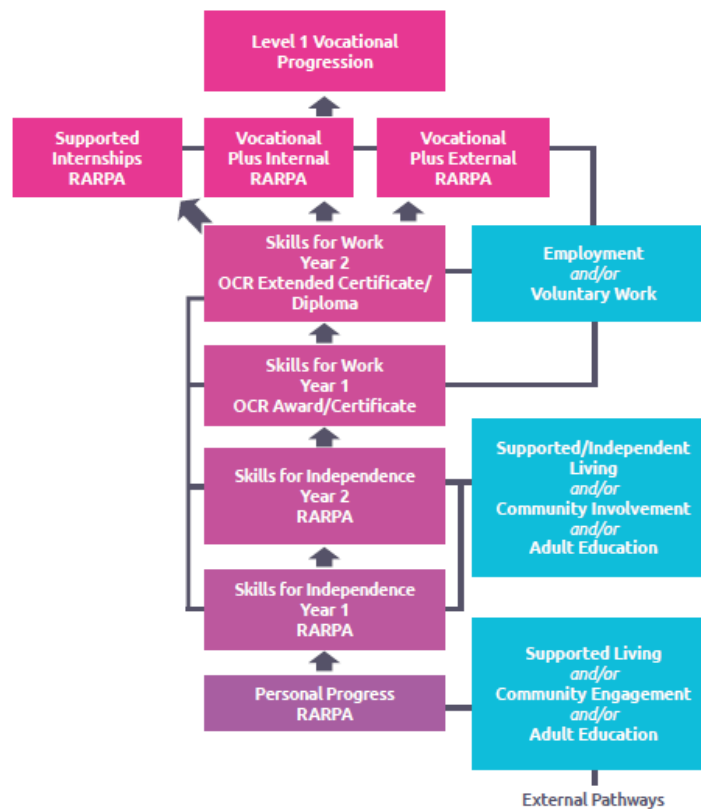


Outcome focussed learning using RARPA

- Where do I want to be in the future/what will I be doing?
- How will I get there???
- What are my first steps (target focussed learning)
- To be reviewed every 6 months



Supported Learning Progression Ladder 2017–2018



All learners will receive:

Enterprise & Innovation

Work Experience

Maths and English

Individualised on-going
progression, guidance,
assessment and support



Personal Progress

- **Course aims:**
- To enable individuals to function meaningfully, productively and as independently as possible in their communities by providing an environment and a range of opportunities within which students can develop.
- The course provides opportunities where students can develop their communication skills, self-esteem and confidence, self-advocacy, personal presentation, accessing the community, maturity, positive relationships leading to an optimum quality of life.

Attendance: 3 Days a Week



Skills for Independence




- **Course aims:**
 - To provide the means to explore and develop valuable skills required for independence and employability.
 - To boost learners' independence and confidence by providing an individualised programme designed around the learner needs which will support their progression to the next stage of their lives.
 - The course focuses on developing social skills, independence in the home and introducing attributes needed for work. It also actively encourages and supports student progression to higher courses.


Attendance: 3 Days a Week



Skills for Work

- **Course aims:**

- To enable learners the opportunity to experience some of the vocational choices available within the college as well as improving their English, maths, ICT and employability skills.
- This course will enable learners to develop skills in practical activities such as: carpentry, catering and hospitality, horticulture and animal care. 
- Learners will be expected to undertake a work experience placement one day a week.
- Unit work completed alongside practical activities - OCR accreditation in Life and Living Entry 3

-  Depending on college location

Attendance: 3 Days a Week
+ 1 to 2 days work
experience



Vocational Plus Skills



- Course aims:
- To prepare students for successful transition from Supported Learning provision to a Level 1 vocational courses in mainstream college
- To build on their existing English and maths qualifications as well as developing new skills and achieving new targets.
- To offer infills into the practical sessions within a variety of levels in vocational subjects.
- To offer Personal Learning programmes to match the learner in their choice of career path and will enable their successful progression either on to further studies at level 1, employment, voluntary work or an internship.

Attendance: 3 Days a Week
+ 1 to 2 days work
experience



Transition Plus

- **Course aims:**
- Design to meet the needs of students who want to further develop their skills to towards external pathways progression.
- To provide the opportunity for learners to infill either within the college or externally to gain valuable experience and skills in the world of work.
- To support learners to achieve the recommended level of English and maths to enable progression.
- To develop the knowledge, understanding and skills needed to manage life and future opportunities.

**Attendance: 3 Days a Week
+ 1 to 2 days work
experience**



Supported Internships



Supported Internship programme is for students with learning difficulties and disabilities aged between 16-24 years who are in **possession** of an Education and Health Care Plan.

Course aims:

- Designed to enable young people with learning difficulties and/or disabilities to achieve sustainable paid employment or continuous voluntary work.
- Dedicated tutor support for both the internee and the employer.
- Personally designed around the desired and agreed progression route.
- The programme will include periods of time spent in a real work environment and the training room.
- Maths and English embedded and delivered at the appropriate level.
- The opportunity to gain the appropriate qualification relevant to the chosen job role.



Sport for all



Festival
of
Sport



Gym



Swimming

Football /
Team games



Dance Studio





Enrichment

- * Festival of Sport
- * Crystal Palace Football
- * Chessington
- * Airhop
- * Hampton Court Palace & Maze
- * Woodcote Green Nurseries
- * Tennis
- * Eco Cycle
- * Horniman Museum - extraordinary collection of objects, collections of anthropology and musical instruments, as well as an acclaimed aquarium and natural history collection.





Work Experience



- * Caffé Cino's
- * Peppers Delicatessen
- * Scallywags
- * McDonalds
- * LA Dogs
- * Blacks Burgers Epsom
- * Barn Owl Café and Shop - Deen City Farm
- * Elmwood Nursery
- * Primark
- * Ecology Centre
- * College Shop
- * Course Canteen
- * College Library
- * College Reception

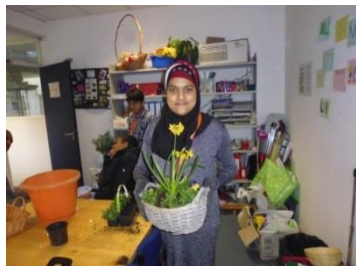




Enterprise



- Each year group is encouraged to participate in running a business as part of their college course. The learner can gain fantastic insight into an industry or role.
- This is also used as a form of work experience.
- Examples of our Enterprises
- Horticulture – Flower arrangements, hanging baskets
- Trade – Christmas decorations, garden decorations/flower boxes
- Catering – special events – fundraising, cake sales.





Any Questions ???

Steve Dixon

Steve.Dixon@Ksep.ac.uk

Head of Supported Learning

