

30 Hours Briefing Summer 2017

30 Hours Project Team



**achieving
for children**

Agenda



- Tax- Free childcare
- 30 Hours
- Eligibility
- Application process and grace period
- Demand and supply
- Delivery models
- Funding
- Communications
- Next steps and workshops
- Questions

Overview

Two new government initiatives:

1. Tax-free Childcare – rolled out from April 2017
2. 30 Hours – September 2017



Tax-Free Childcare Overview



£8

£2

**Childcare
account**

- Parents will be able to open an online account, which they can use to pay for childcare from a registered provider. They can receive up to £2000 a year or £4000 for a child with a disability.

Tax-Free Childcare

Eligibility is similar to 30 hours eligibility criteria:

IN WORK



Both parents must be in work (or one parent for single parent households)

The exceptions:

NOT CLAIMING UC, TC or childcare vouchers



Neither parent can be in receipt of tax credits or Universal Credit

under
12



under
17



Currently open to parents with children up to the age of 4, will be gradually rolled out to the upper ages by December 2017.

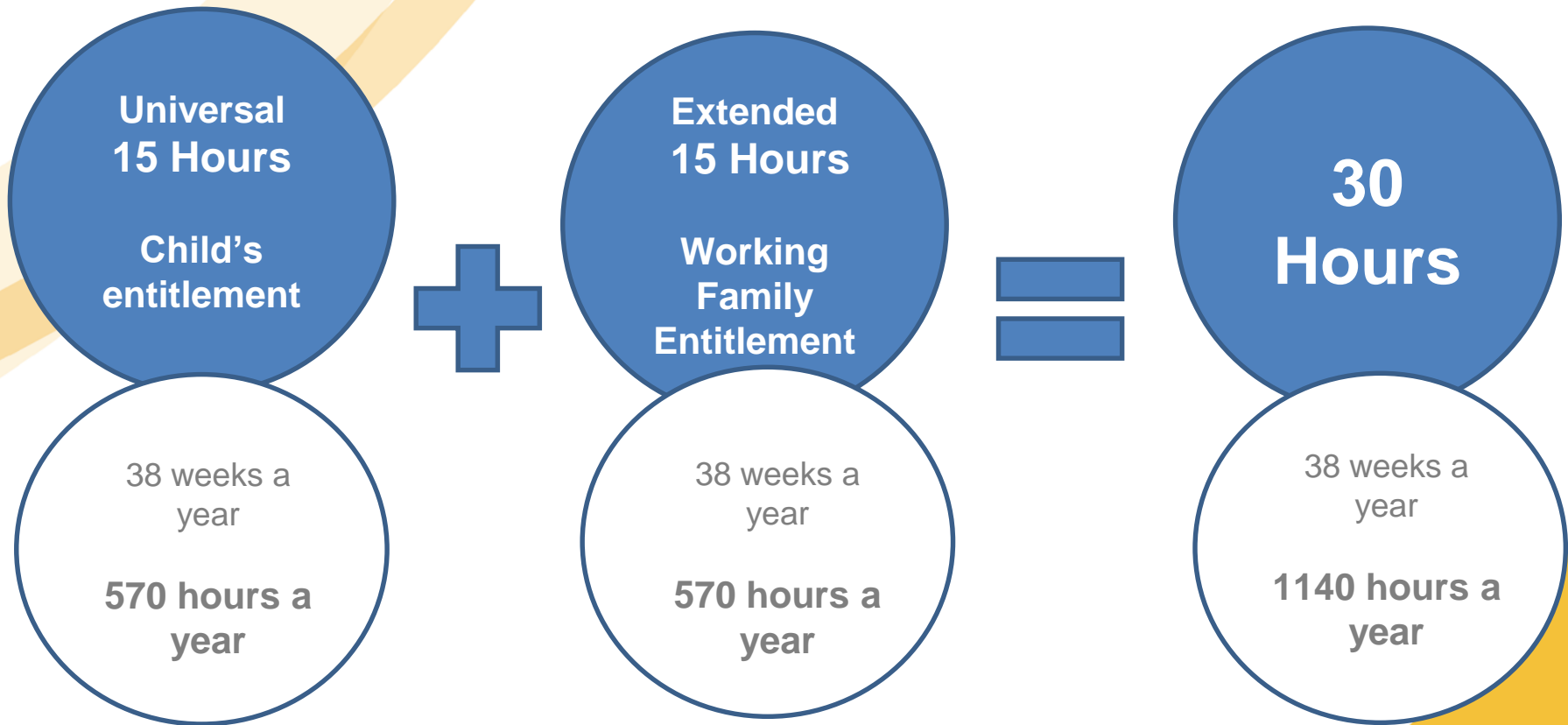
30 Hours - Overview

2. 30 hours

September 2017 will see the introduction of 30 hours of childcare.

From the term after their 3rd birthday children of eligible families will be entitled to an additional 15 hours of free (extended hours), funded childcare in addition to the universal 15 hour delivery already in place.

30 Hours -Overview



Hours can be 'stretched' to give a reduced hours per week for more weeks per year

Eligibility

Eligibility is for working households



Each parent (or sole parent in a single parent family) earning:

- A minimum of the equivalent of 16 hpw at the NMW or NLW
- A maximum of no more than £100,000 per year

(This includes parents that are self-employed and on zero-hours contracts)

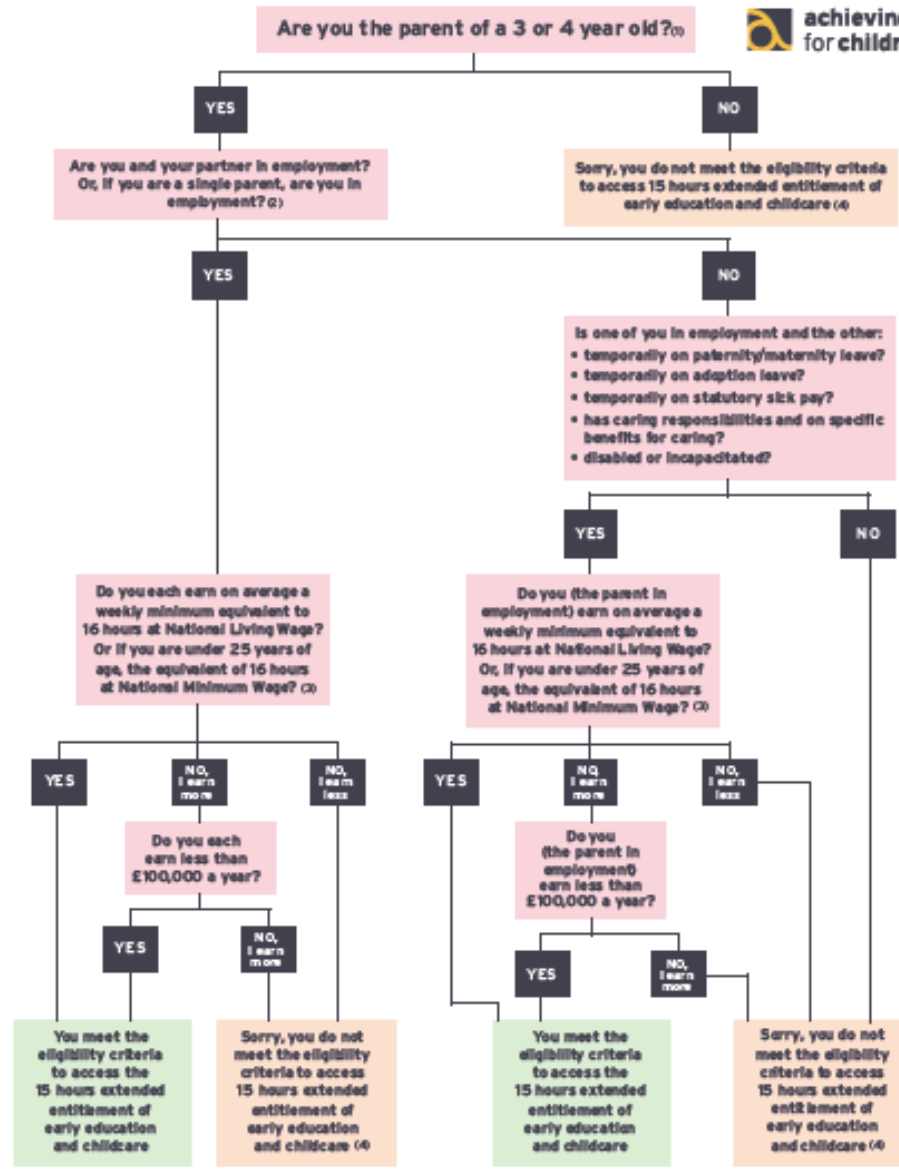
There are a few exceptions: where **one parent is in employment** and the other is on:

- maternity/paternity leave
- statutory sick pay
- has caring responsibilities
- has a disability

Parent eligibility flow chart for extended 15 hour entitlement



Eligibility



(1) Please refer to the FAQs to check when your child based on birth date, can start to receive the extended entitlement

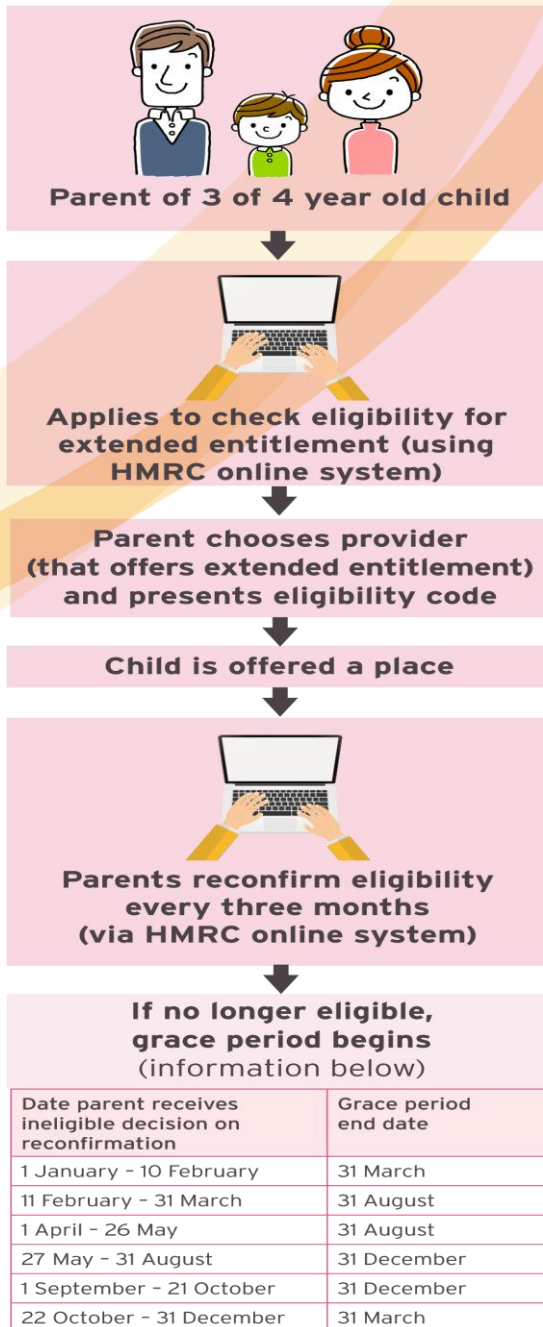
(2) Self-employed parents and parents on zero-hour contracts will be eligible if they meet the average earnings criteria.

(3) You do not need to actually work 16 hours a week, but your earnings must equal at least 16 hours work at minimum or national living wage. This currently equates to a minimum income requirement for a parent or carer over 25 years of £15.20 a week, for 21 to 24 year olds £15.20 a week, 18 to 20 year olds £10.00 a week or under 18s, £6.4 a week

(4) There are ways that you can get into employment or increase your working hours that can make you eligible for the extended entitlement of early education and childcare. Visit the Jobcentre Plus or your GP's Advice Bureau.

Application Process

<https://childcare-support.tax.service.gov.uk/par/app/applynow>



- The Childcare Service System has now gone live for parents with children up to the age of 4.
- Parent can access 30 hours the term after the code is issued
- Parents should be encouraged to apply the term before their child meets the age criterion
- Parents will need to reconfirm eligibility every three months via HMRC system

HMRC helpdesk number: 0300 123 4097



**achieving
for children**

Grace period

- If parents fall out of eligibility they enter a **grace period** to give the parents the opportunity to regain employment.
- If at end of grace period parent is not back in employment child will still be entitled to universal 15 hours.
- A child will not be able to apply to start at a setting if in the grace period

Period where parent reconfirms eligibility	If parent is no longer eligible the grace period end date will be:
1 January – 10 February	31 March
11 February – 31 March	31 August
1 April – 26 May	31 August
27 May – 31 August	31 December
1 September – 21 October	31 December
22 October – 31 December	31 March

Demand and Supply

Early estimates from DfE indicate:

- Kingston - **1,470** (circa **30%** of 3 & 4 yo population)
- Richmond - **1,560** (circa **26%** of 3 & 4 yo population)

Currently we have had the following number of successful applications for 30 hour codes:

- Kingston – 211
- Richmond – 122

There is a slow uptake, with most eligible parents already paying for childcare. Therefore, most of the places are converting from paid for to funded places.

We may see an increase in number of successful applications from January 2018 onwards.

What does the demand look like?

Our demand surveys have shown that parents:

- Currently not eligible would consider becoming eligible by taking up employment.
- Want more than 30 hours a week
- Need non-term time childcare
- Prefer the one provider model

What you need to do:

- Assess local demand – carry out your own demand surveys
- Market research – understand what is happening in your local area
- Take a planned approach to deciding whether or not you will deliver 30 hour places

How can parents use the 30 hours?

Parents will be able to access the 30 hours flexibly to meet their working needs. Parents will be able to access their total of 1140 hours a year in the following ways:

- 30 hours a week for a minimum of 38 weeks
- 24 hours over 47.5 weeks
- 22.35 hours over 51 weeks

Parents will be able to do this by accessing:

- Funded provision between 6am and 8pm
- Maximum of 10 funded hours a day
- No more than two funded sites a day



Delivery Models

Your options:

- Go alone – offer full 30 hours alone
- Partnership on one site
- Partnership on two sites
- Partnership over the year (multiple sites)
- Nothing

Providers will only be able to claim the funding for children that are on roll with them on headcount day.

Funding

- The funding rate for the extended hours will be at the same rate as the universal hours
- You will be able to claim for the extended hours in the same way as the universal hours, through the Provider Portal (*this is currently undergoing an update*)
- Providers will only be able to claim the funding for children that are on roll with them on headcount day
- When signing up on the DOP providers are signing up for all funding – do not have to register separately
- New parent declaration form to reflect the changes brought forward by 30 hours

Communication of 30 hours to parents

- Twitter feed
- Facebook
- 30 Hours page on RBK & LBRUT website
- 30 hours marketing materials
- Via project partners (JCP, CAB, Children's Centres)

Eligible children
Children who are eligible for the extended entitlement can receive the extra free hours from the start of the term following their first birthday:

Child turns 1 year	Can receive free hours from
1 August 2014 to 31 August 2014	September 2014 (Autumn)
1 September 2014 to 31 October 2014	January 2015 (Spring)
1 January 2015 to 31 March 2015	April 2015 (Summer)
1 April 2015 to 31 August 2015	September 2015 (Autumn)

Pausing out of eligibility
If your family no longer meet the eligibility criteria your child will not immediately lose their childcare place for the extended entitlement, as there will be a grace period to give you the opportunity to reapply again and if eligible your child can continue to receive the extra free hours. The grace period is currently 12 months from the date your child was last eligible to receive the extra free hours. If you do not reapply within the grace period, your child will no longer be able to access the extended entitlement, but will still be able to receive the standard 15 hours a week (370 hours a year) of free childcare for all 3 and 4 year olds.

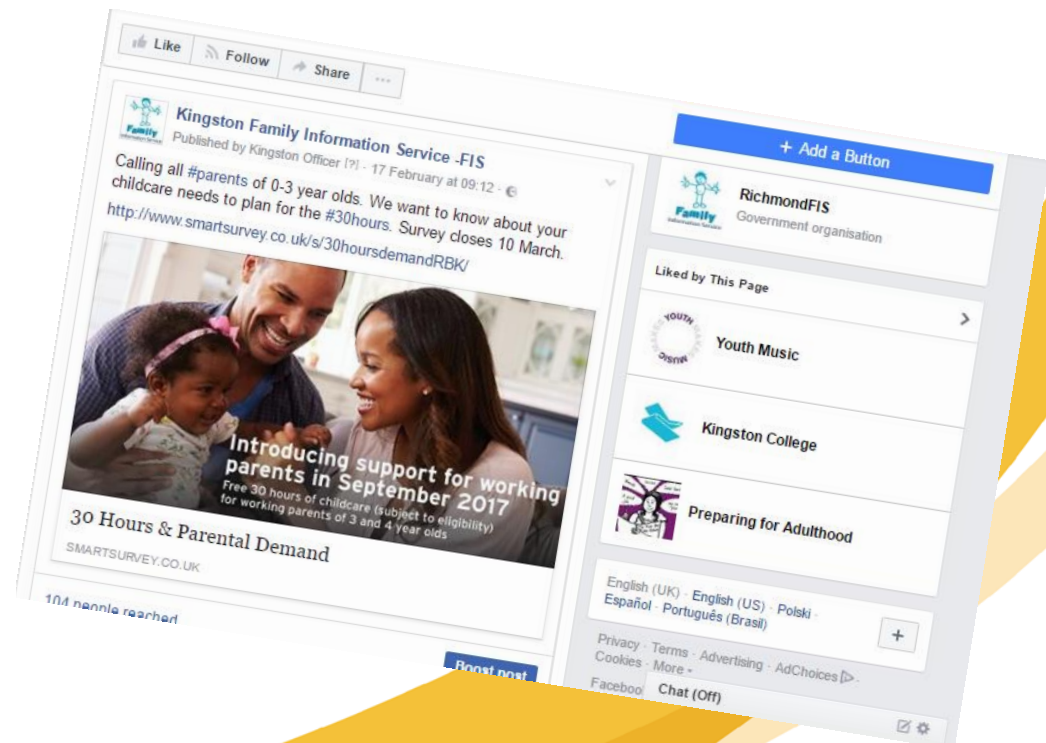
Children's centres
All families with children under 5, plus registered nurseries and daycares, are welcome to use the children's centres to help their children get the best start in life. All children's centres will offer informal support for parents and a place for your child to play and learn.
For more information on local services for children and families, visit www.richmond.gov.uk/childrens_centres

Useful contacts
You can contact our Family Information Service at familyinfo@richmond.gov.uk or 020 8647 5252

More information
For more information on the extended entitlement please visit:
www.richmond.gov.uk/30_hours_free_childcare
or www.richmond.gov.uk/30hours

30 hours
free childcare for
3 and 4 year olds

Introduced in Richmond
from September 2017



Communication of 30 hours to providers

- Fortnightly Friday Update includes 30 hours info
- Monthly update (on AfC website)
- Social media (Facebook and Twitter)
- AfC website dedicated 30 hour provider resource page (including FAQs)



National Communications

DfE introduced an umbrella brand – “Childcare Choices”

Communicates all childcare schemes in one place for parents. It includes tools for parents, e.g. childcare calculator, sign up for email reminders.

www.childcarechoices.gov.uk

Radio, billboards and digital marketing

There will be a national communications campaign once the minister has signed off on this.



Next steps

- Identify demand – carry out surveys with parents
- Communicate the 30 hours offer to parents
- Market research - begin thinking about how 30 hours will affect your business
- Begin assessing the different delivery models
- Sign up for Tax-Free Childcare
- Attend our workshops
- Look at the 30 hours resources and materials
<https://www.achievingforchildren.org.uk/30-hours>

You could ...

- You can attend regular special 30-hours LEDs co-produced with the Foundation Years team
- Visit www.foundationyears.org.uk for news, updates and resources. Sign up to the newsletter
- Visit www.childcareworks.co.uk for regular blogs, tools, resources and news
- Read the regular 30-hours columns in Nursery World

Our Support

- **Support workshops** - We will be developing and carrying out support workshops based on your needs. Please identify the areas that you would like to have support with on our evaluations
- **Business support workshops** - 1:1 support
- **Communicating via bulletins** – e.g. Friday Update, monthly update



Please complete our evaluation form. Your views matter to us and will help us plan for the upcoming workshops.