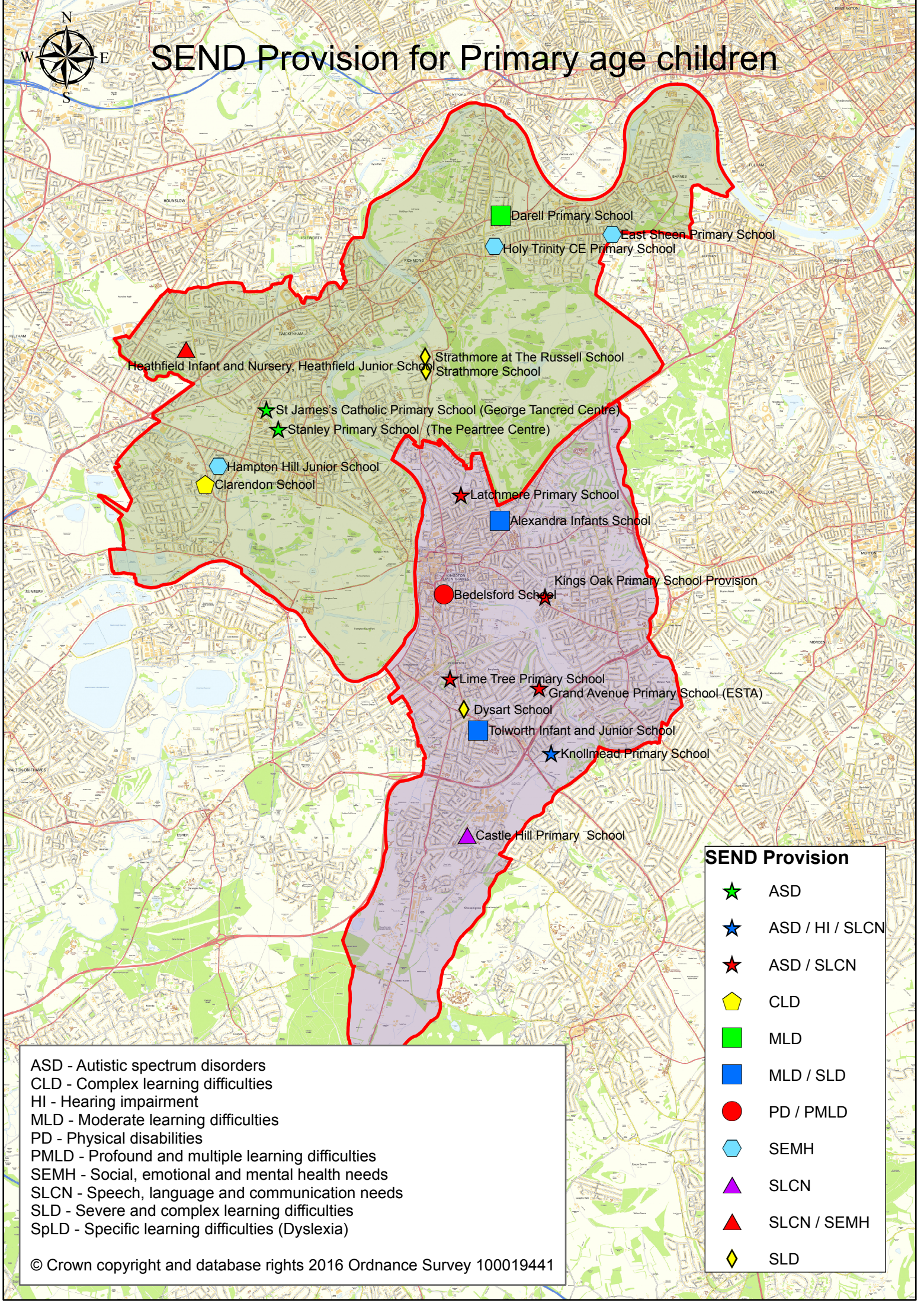




SEND Provision for Primary age children



- Darell Primary School
- Holy Trinity CE Primary School
- East Sheen Primary School
- Heathfield Infant and Nursery, Heathfield Junior School
- Strathmore at The Russell School
- Strathmore School
- St James's Catholic Primary School (George Tancred Centre)
- Stanley Primary School (The Peartree Centre)
- Hampton Hill Junior School
- Clarendon School
- Latchmere Primary School
- Alexandra Infants School
- Bedelsford School
- Kings Oak Primary School Provision
- Lime Tree Primary School
- Grand Avenue Primary School (ESTA)
- Dysart School
- Tolworth Infant and Junior School
- Knollmead Primary School
- Castle Hill Primary School

SEND Provision	
★	ASD
★	ASD / HI / SLCN
★	ASD / SLCN
⬡	CLD
⬡	MLD
⬡	MLD / SLD
●	PD / PMLD
⬡	SEMH
⬡	SLCN
▲	SLCN / SEMH
◆	SLD

ASD - Autistic spectrum disorders
 CLD - Complex learning difficulties
 HI - Hearing impairment
 MLD - Moderate learning difficulties
 PD - Physical disabilities
 PMLD - Profound and multiple learning difficulties
 SEMH - Social, emotional and mental health needs
 SLCN - Speech, language and communication needs
 SLD - Severe and complex learning difficulties
 SpLD - Specific learning difficulties (Dyslexia)