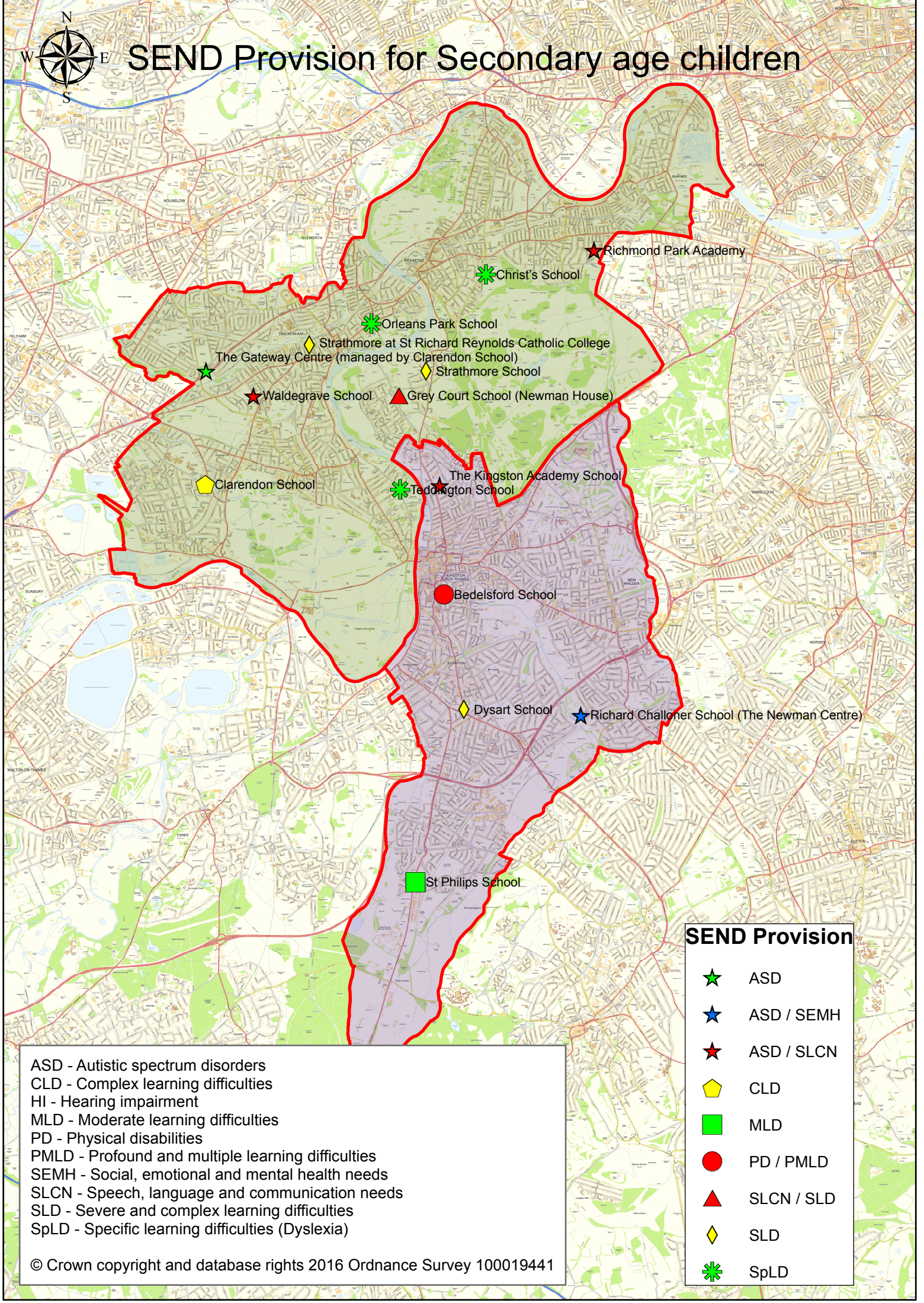




# SEND Provision for Secondary age children



ASD - Autistic spectrum disorders  
 CLD - Complex learning difficulties  
 HI - Hearing impairment  
 MLD - Moderate learning difficulties  
 PD - Physical disabilities  
 PMLD - Profound and multiple learning difficulties  
 SEMH - Social, emotional and mental health needs  
 SLCN - Speech, language and communication needs  
 SLD - Severe and complex learning difficulties  
 SpLD - Specific learning difficulties (Dyslexia)

SEND Provision	
★	ASD
★	ASD / SEMH
★	ASD / SLCN
◇	CLD
■	MLD
●	PD / PMLD
▲	SLCN / SLD
◇	SLD
✱	SpLD