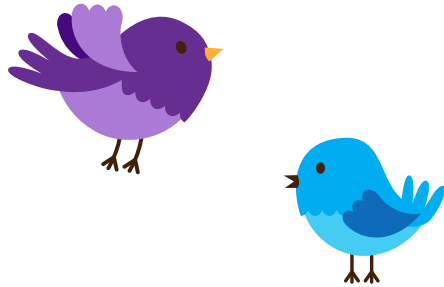


Courses are usually held termly at:

Limited crèche facilities are available for the course.



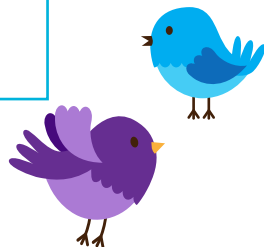
For more information about the programme and details of the next information meeting please contact:

Tom Connor (Educational Psychologist)

T: **020 8487 5464**

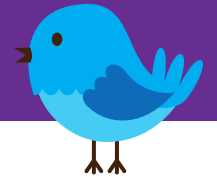
E: **[tom.connor@achievingforchildren.org.uk](mailto:tom.connor@achievingforchildren.org.uk)**

The next information meeting will be held on:



(NAS) National Autistic Society

# The NAS EarlyBird programme in Richmond\*



Do you have a pre-school child on the autistic spectrum?





# What is the NAS EarlyBird programme?

## What is it?

The National Autistic Society (NAS) EarlyBird\* programme has been developed for families of pre-school children (under the age of 5 years old) with a diagnosis of an autistic spectrum disorder (ASD).

## What do we do?

This is a three month programme combining group training and individual home visits. The group sessions will run on the same day each week and will last two and a half hours. The home visits will last one hour.

## Who runs it?

The programme is run by professionals with experience of working with children with ASD, who have been trained in the EarlyBird programme.

## Who can come?

On each course we can work with six families. Each family has two places offered. This is so that you can bring anyone who is important in your child's life to learn with you.

The NAS EarlyBird programme works in partnership to help parents to:

- Understand their child's autistic spectrum
- Develop communication with their child
- Apply practical strategies to manage their child's behaviour

## Further information:

If you would like to attend EarlyBird sessions, you must come along to an information meeting, which will tell you more about the programme. You can then decide if you would like to attend the next course, and you can complete the application form. There are limited places, so we may have to organise a waiting list.

There may be limited crèche facilities on the course. If you require a crèche place, please let us know at the information session.

We look forward to meeting you soon.



(\*EarlyBird is a registered trademark of The National Autistic Society)

