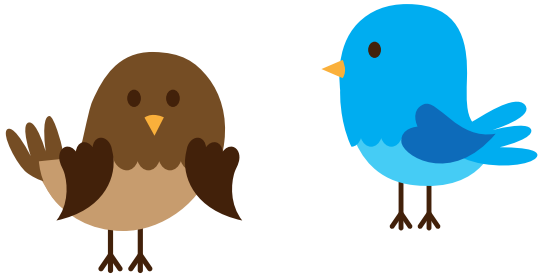


Courses are usually held termly at:

**Surbiton Children's Centre,  
Alpha Road, Surbiton KT5 8RS**

Crèche facilities are available for the course.



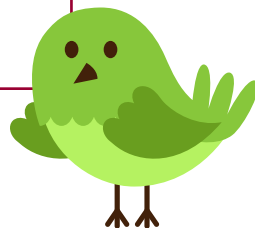
For more information about the programme and details of the next information meeting please contact:

**Louise Dibble**

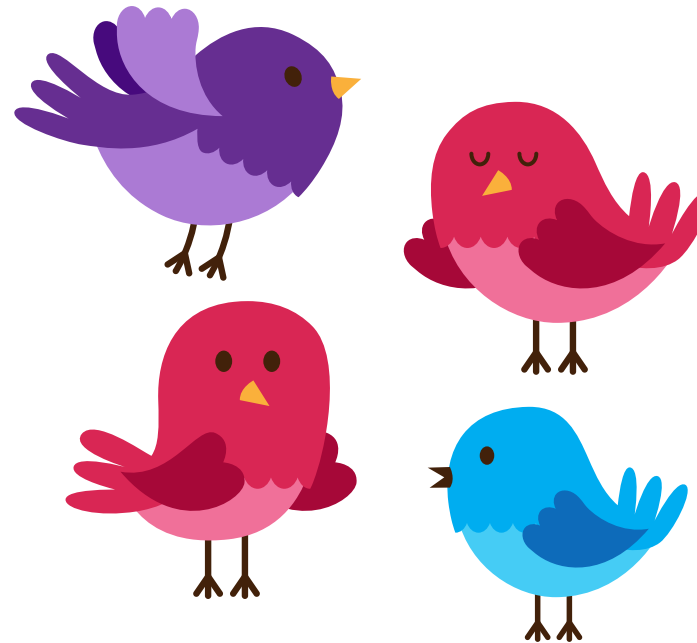
**T : 020 8547 6698**

**E: [louise.dibble@achievingforchildren.org.uk](mailto:louise.dibble@achievingforchildren.org.uk)**

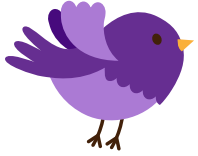
The next information meeting will be held on:



# EarlyBird\*



Early intervention course for parents and carers of pre-school children with an autism spectrum disorder



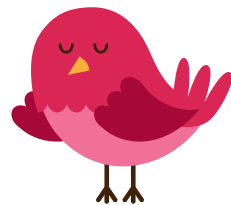
The National Autistic Society (NAS) EarlyBird\* programme has been developed to support parents of pre-school children who either already have or are 'on the road to' a diagnosis of an autism spectrum disorder.

- It is a three month programme involving up to six families
- It brings together parents and carers for daytime group training sessions once a week
- It involves families being visited during the programme in their own homes

The NAS EarlyBird\* programme works in partnership with parents to help them to:

- understand their child's autism spectrum disorder
- develop their child's communication skills
- develop and apply practical strategies to manage their child's behaviour

(\*EarlyBird is a registered trademark of The National Autistic Society)



## Kingston Trainer Team

### **Anna Abrahams**

Speech and Language Therapist

### **Karen Cooke**

Speech and Language Therapist

### **Fraiza Sword**

Speech and Language Therapist

### **Chris Chong**

Early Years SEN Advisory Team

### **Louise Dibble**

Portage Home Visitor

### **Jane Hewitt**

Portage Home Visitor

### **Karen Jerwood**

Portage Home Visitor

### **Ann Macpherson**

Portage Co-ordinator

### **Margaret Vyse**

Senior Specialist Educational Psychologist

### **Dorothy Mallet**

Senior Specialist Educational Psychologist

### **Helen Woodhouse**

Educational Psychologist

### **Sheila Tyler**

SEN Teacher and SENCo

