

# How we will support children and young adults with special educational needs and disabilities



**Easy read booklet**

# What this booklet tells you



This booklet tells you our plan to support children and young adults with special educational needs and disabilities in Tower Hamlets.



This plan was made by

- Tower Hamlets Council
- the NHS
- local schools
- parents
- young adults with special educational needs and disabilities.



Our plan is made up of 6 **priorities**. Our **priorities** are what we want to do first because they are important.



They are also what young adults with special educational needs and disabilities and their parents think are most important.

# Priority 1

## Support when it is needed



It is important for us to give children and young adults with special educational needs and disabilities support when they need it.



We will think about how we can give support as quickly as possible.



We will ask services that give different types of support to work together.



We will tell everyone what we are doing to make the support better.

# Priority 2

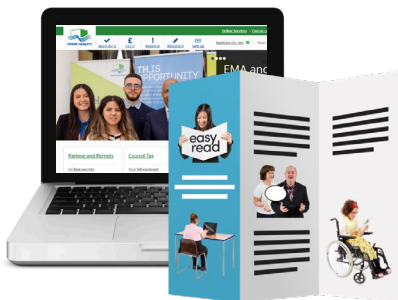
## Support services that are easy to use



It is important for support services to be easy for children and young adults with special educational needs and disabilities to use.



We will listen to what they and their families think of our support services.



We will make sure information about our support services is useful and up to date.



We will make sure this information is easy to find.

# Priority 3

## Support for young children



It is important for us to know as soon as young children need support.



We will then give them and their families this support as quickly as we can.



We will support children while they are waiting for an **EHC needs assessment**.



An **EHC needs assessment** is a way to test if someone needs extra support to learn or look after themselves.

# Priority 4

## Support in schools



It is important for us to support children with special educational needs and disabilities when they are at school.



We will give them more support in **mainstream schools**. **Mainstream schools** are schools that teach all children.



We will make sure they have places in school where they can learn and get support.



We will support them when they move from primary school to secondary school.

# Priority 5

## Support for young adults



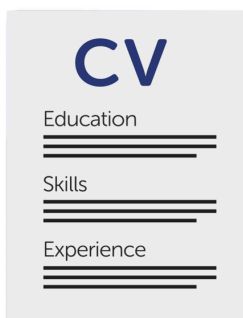
It is important for us to support young adults with special educational needs and disabilities and give them chances to do well in life.



We will help young people to get ready for becoming an adult.



We will help young people find jobs by giving them chances to learn and work.



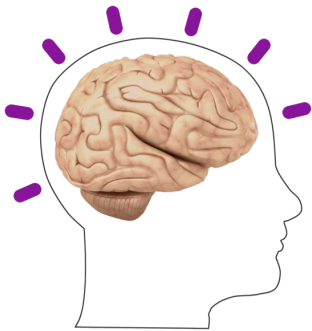
We will help them learn new skills that they will need as an adult.

## Priority 6

# Support for neurodiverse children and young adults



It is important for Tower Hamlets to be a place where all children and young adults feel safe and welcome.



This includes children and young adults who are **neurodiverse**.

**Neurodiverse** means their brain works in a different way from other people and this affects their day to day life.



We will make sure workers know how to support neurodiverse children and young adults.



We will make it easier for children who are neurodiverse to play and join in with fun activities in Tower Hamlets.



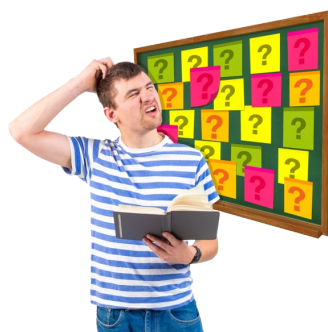
# What happens next



Every year we will think about how we will make our priorities happen.



Each of our 6 priorities will be given to a different group of people in our **Special Educational Needs Improvement Board**.



Our **Special Educational Needs Improvement Board** does work to help make the lives of people with disabilities better. They think about issues and how to solve them.



We are excited to hear about the work each group does to make their priority happen.

# Thank you for reading this booklet



Thank you to A2i for the words  
**www.a2i.co.uk** (reference 40355)

The full version of this document is called  
**Special Educational Needs, Disability  
and Inclusion Strategy**