



SEND in SWL ICS. Kingston SEND Partnership Board.

27th July 2022

**Maureen Fitzgerald Hopkins.
Deputy Director of Quality and Nursing
South West London Integrated Care
Board.**





INTEGRATED CARE SYSTEMS ICSS

NHS England

Performance manages and supports the NHS bodies working with and through the ICS

Care Quality Commission

Independently reviews and rates the ICS

STATUTORY ICSS



Membership: independent chair; non-executive directors; members selected from nominations made by NHS trusts/foundation trust, local authorities and general practice

Role: allocates NHS budget and services; produces five-year system plan for health services



Membership: representatives from local authorities, ICB, Healthwatch end of the partners

Role: planning to meet wider health, public health and social care needs; develops and leads integrated care strategy but does not commission services



(Popn 1-2 million) - setting strategy; managing overall resources and performance; planning specialist services across larger footprints; strategic improvements to key system enablers such as digital infrastructure, estates and workforce planning. Health's statutory duties for SEND and safeguarding will be held at systems/ICS level.

(Popn 250,000-500,000) - redesigning local services; joining up care pathways across NHS, local government and VCS services; supporting the development of PCNs; building relationships with communities - local authority footprint

(Popn 30,000-50,000) - formation of Primary Care Networks; bolstering primary care services; developing multidisciplinary teams; delivering preventive interventions for people with complex care need

WHAT MIGHT THIS MEAN FOR SEND DELIVERY?
Residential special schools
Specialist inpatient services
Palliative Care
Secure children's homes
Secure Stairs
Keyworker services
DSR/CETR
Children's continuing care
Education, Health & Care Plans formal/legal processes in place
Physio/OT/SALT
Children's Community Nurses
Child Development Centre
CAMHS
Personal budgets
Ordinarily available provision/graduated response
Child in need
SEN Support
Mental Health Support Teams
Making every contact count
Early help
Social Prescribing
School nursing
GP services
2 1/2 year check
Healthy child Programme
Children's Centres

PARTNERSHIP AND DELIVERY STRUCTURES AND PARTICIPATING ORGANISATIONS

Provider collaboratives

NHS trusts (including acute, specialist and mental health) and as appropriate voluntary, community and social enterprise (VCSE) organisations and the independent sector: can also operate at place level

Health and Wellbeing boards

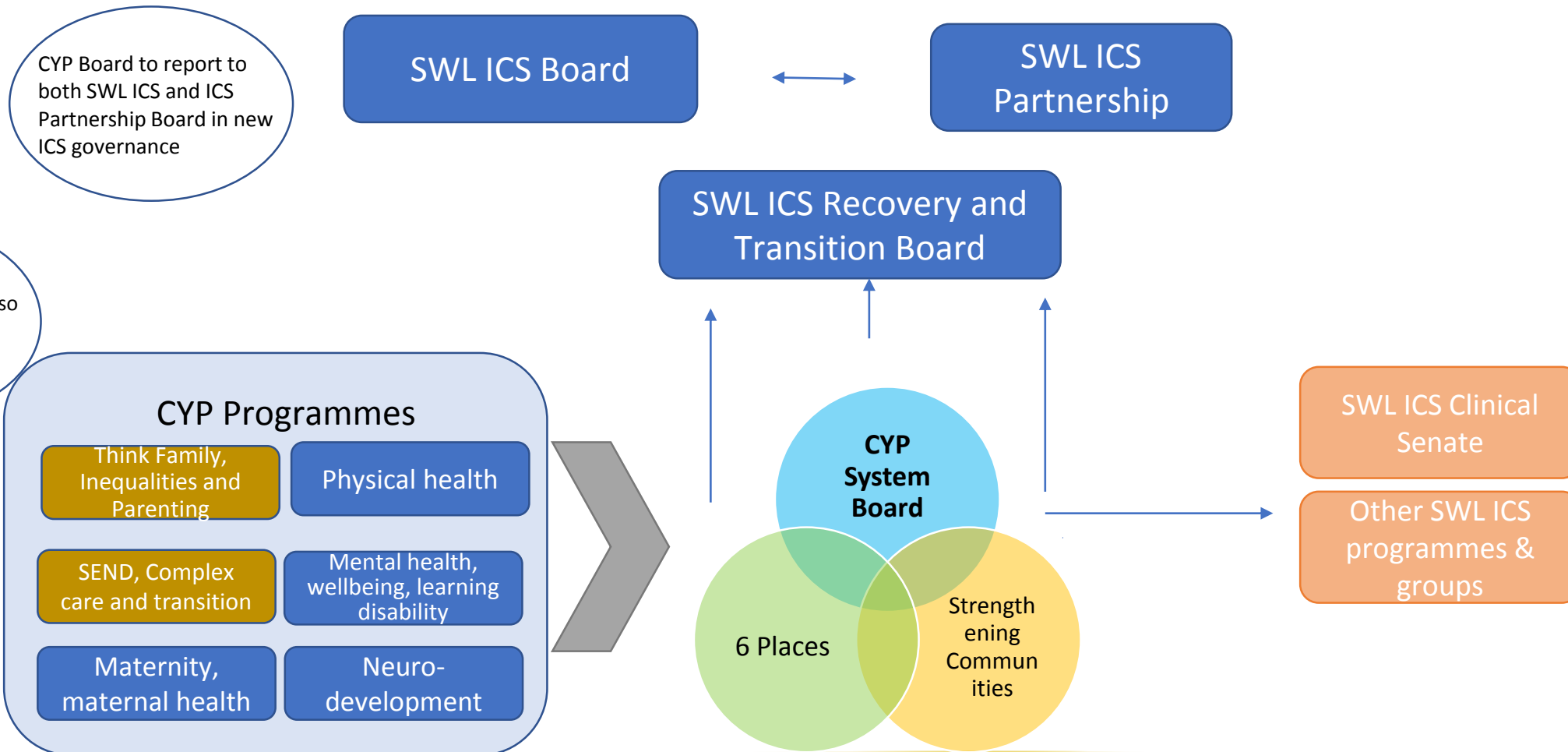
ICS, Healthwatch, local authorities, and wider membership as appropriate; can also operate at system level

Primary care networks

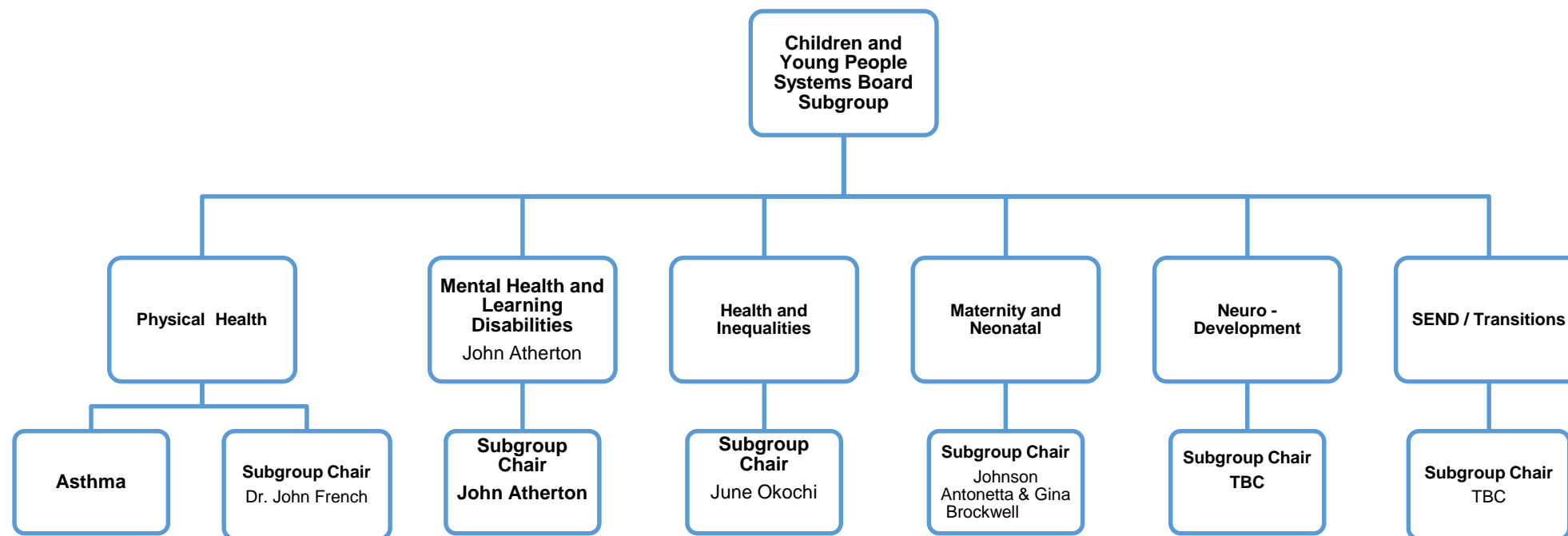
General practice, community pharmacy, dentistry, opticians

Place-based partnerships

can include ICB members, local authorities, VCSE organisations, NHS trusts (including acute, mental health and community services), Healthwatch and primary care



Children and Young People Systems Board Subgroup



CYP Programmes – Main Focus/Priorities

Physical health

- Standardise the management of asthma across the system and build an asthma network across SWL
- Support and encourage breastfeeding through early years services and wider community venues.
- Develop a system wide approach, model and pathway for epilepsy.
- Understand the impact of Covid-19 on CYP / impact of Covid-19 and well being

Emotional health and wellbeing, learning disability

- Building additional crisis support across SWL for Children and young people i.e CAMHS crisis line.
- Work towards meeting the waiting times access for Eating Disorder services.
- Roll out MH support teams in schools across SWL
- Shared learning for the Mental Health school trailblazers pilot out across SWL
- Review community and acute pathways for people with learning disability/autism to ensure smooth transition to Adult services across SWL
- Positive Behaviour Support provision for our CYP presenting with behaviours that challenge

Neuro-development

- Supporting children and young people with special educational needs and disability to be more independent
- Work with partners to ensure the health component of education health and care plans is robust and of high quality
- Work with local neurodevelopment services to build on the current service offer.

Maternity, maternal health

- Continued commitment to maintain safe and personalised maternity care by formalising the Ockenden recommendations
- Committed to ensuring women receive continuity of carer as set out in Better Births the NHS Long Term Plan
- Neonatal care - putting parents and families at the heart of our decision-making and our services
- Building the membership of Local maternity systems to further support the CYP agenda.
- Improve childhood immunisation across SWL
- Getting it right on the first 1000 days

SEND, Complex care and transition

- Up to date SWL complex care market assessments
- LA and NHS SWL financial management design principles agreed and implemented
- Visibility of Total Place resources for complex care and 6, 12, 18 month plan for investment increase in prevention and early intervention (16 - 25)
- Lead, Joint and/or single commissioning and market management arrangements for Complex Transitions
- Opportunities for market development identified and any integrated approaches to capital investment Post 16 Skills, Education and Housing Health and LA integrated approach
- Reducing inequalities to care provisions

Think Family, Inequalities and Parenting

- Think Family Approach & Children & Young People Inequalities embedded in place planning and shared learning/Governance
- Integrated Health and Care Parenting Offer
- Development and Implementation of SWL Children's Continuing Care Policy and Resolution Process
- Making SWL an attractive place for work professional such as Medics and Nursing

SWL ICS Head of SEND

- The SWL London SEND lead will work with the Directors of Quality, Local Authority Leads and the Chief Nurse to provide leadership for Special Educational Needs and Disabilities (SEND) across South West London Integrated Care System to deliver appropriate assurance to the Integrated Care System around meeting statutory duties for children and young people, aged 0 – 25 years, with special educational needs and disability.

Key responsibilities:

- Oversight and assurance across health, education and social care services 0-25 delivering care and support to children and young people with SEND.
- Coordination and assurance of strategic input from health, education and social care into the EHC process and reporting of their positions and audits to relevant quality committees .
- Strategic assurance regarding accountability of the Integrated Care System's transformation programme development of the joint commissioning and local area SEND strategies.
- Championing co-production as a way of working across health, education and social care in the local system.
- Coordinating the Strategic SEND partnership and leading on the coordination of the SEND improvement plan.
- Leading on engagement and partnership relations with Parents and Carers working with Head of SWL ICS engagement.
- Matrix line management of place based DCOs and DMOs.

SWL SEND Development plan

Areas for development highlighted through NHS E SEND Heat map.

- Data systems to understand commissioning requirements across SWLondon
- ICS data dashboard related to key SEND performance data and provider performance
- Quality improvement to support the agenda of “SEND is everybody’s business”
- Effectiveness of partnership arrangements
- Solution focused working across SWLondon



Council for Disabled Children ;ICS briefing

<https://councilfordisabledchildren.org.uk/sites/default/files/uploads/attachments/What%20does%20the%20transition%20to%20Integrated%20Care%20Systems%20mean%20for%20the%20SEND%20system.pdf>