



TOWER HAMLETS

Preparing For Adulthood Steps to Employment

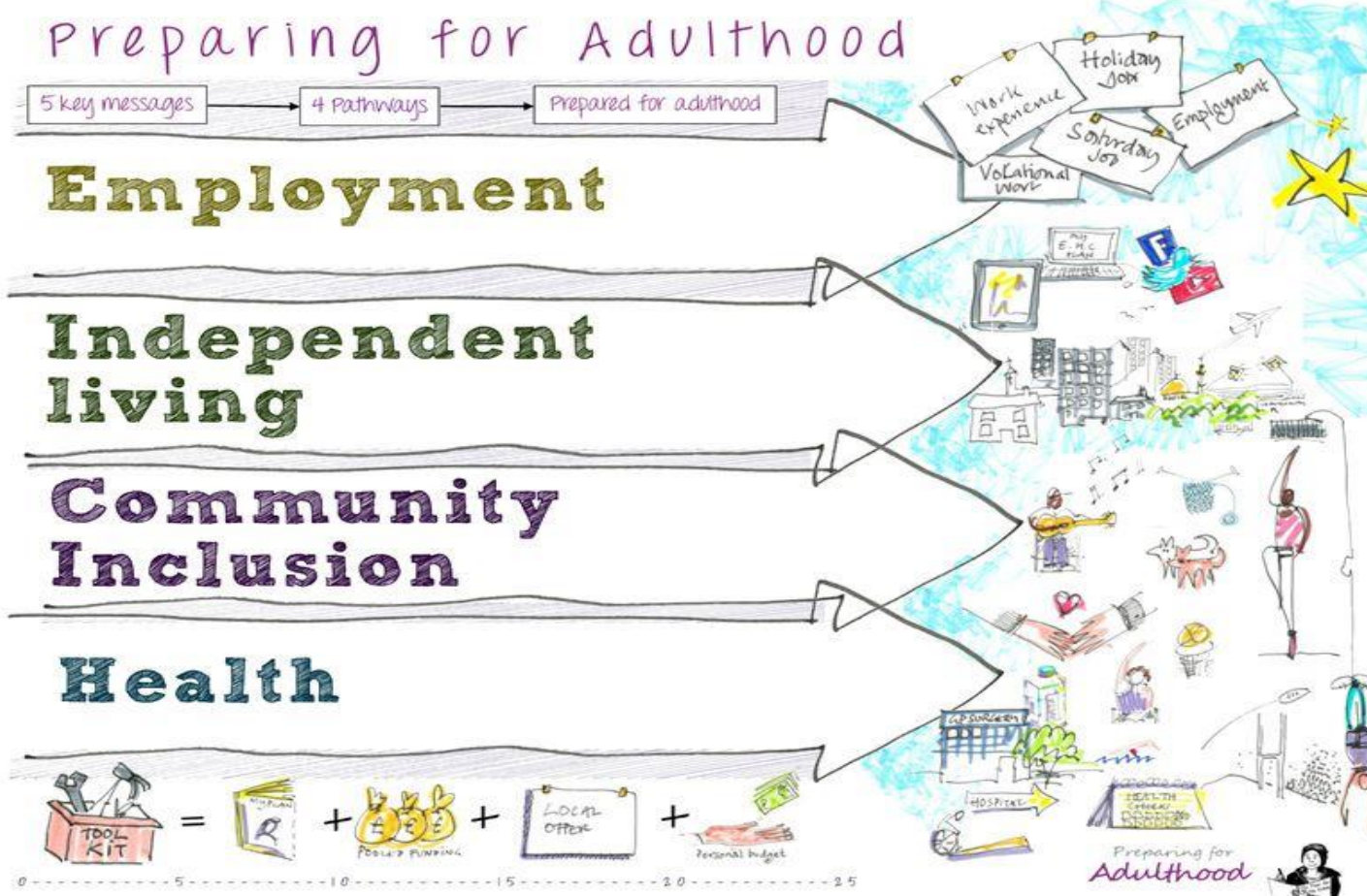
Tina Sode



Tower Hamlets Preparing for Adulthood Agenda



- Personalise your approach
- Develop a shared vision
- Improve post-16 options and support
- Raise aspirations
- Plan services together



Steps to Employment - Tower Hamlets



- Tower Project: 1 year Supported Internship Programme for young people who want to work in the Hospitality and Leisure sector.
- Tower Project: Pre-Internship programme for 17 - 24-year-olds who hold an EHCP and want to work but are not ready for an Apprenticeship or Supported Internship.
- The DFN Project Search is a Supported Internship programme based at Queen Mary University of London in partnership with Phoenix School/College and Tower Hamlets Council.
- DFN Project Search – Marriott Canary Wharf and Goldman Sachs Supported Internships



Steps to Employment - Tower Hamlets



- Tower Hamlets Council Apprenticeship: A 15-month inclusive apprenticeship programme for young people over the age of 16 who hold an EHCP.
- New City College: A 12-month work-based Supported Internship Programme for 16 – 25-year-olds.
- The main entry criteria for these programmes is an aspiration to work, increase independence and exist as a contributing member of the community.



Steps to Employment Out of Borough



- Supported internships in hospitals via DFN Project Search
 - ❖ Homerton Hospital – Hackney
 - ❖ Whipps Cross Hospital – Leytonstone
 - ❖ Royal London Hospital - Whitechapel
 - ❖ Newham Hospital - Newham
 - ❖ St Bartholomew's Hospital – City of London



Steps to Employment

An intern's experience



The best of London
in one borough



Sources of Information



- Local offer: <https://www.localoffertowerhamlets.co.uk/>
- Young Workpath: youngworkpath@towerhamlets.gov.uk
- SEN Team Main line: 0207 364 4880
- PfA SEN Team email: 14-25SEND@towerhamlets.gov.uk

