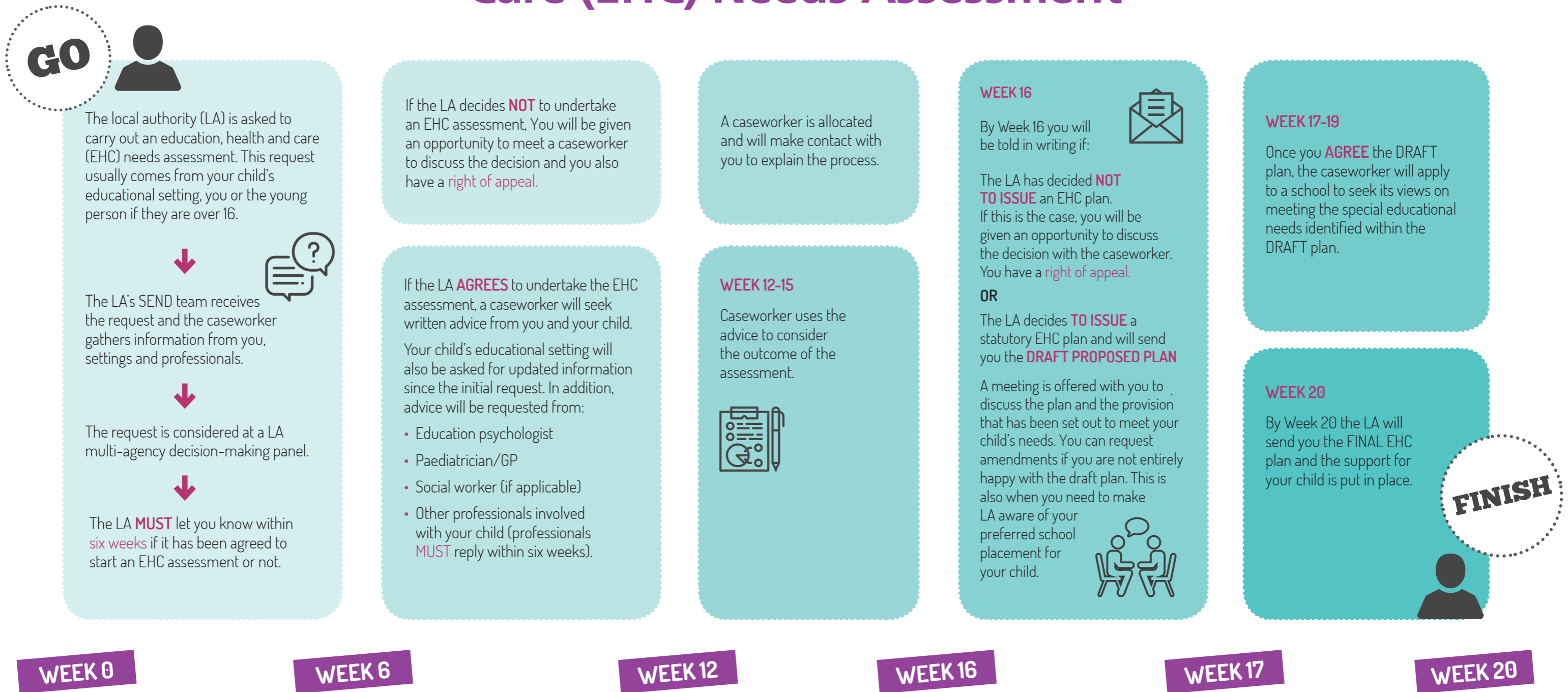


Timeline for an Education, Health and Care (EHC) Needs Assessment



WEEK 0

WEEK 6

WEEK 12

WEEK 16

WEEK 17

WEEK 20



i NOTE: If you make a request, the LA will ask you and professionals to provide preliminary advice within two weeks.

i NOTE: You have 3 weeks to consider the proposed EHC Plan. Let the caseworker know if you have any feedback about it and any changes you want them to consider.

i NOTE: Schools/settings have 15 calendar days to respond to consultations for placements.

i NOTE: If at any time you need independent advice and support you can contact Tower Hamlets and City Sendiass on 020 7364 6489.